

# **THE BOATHOUSE AT CANAL DOCK**

JULY 12, 2012

CITY OF NEW HAVEN  
**JOHN DeSTEFANO JR.**  
MAYOR

KELLY MURPHY, AICP – ECONOMIC DEVELOPMENT ADMINISTRATOR  
KARYN GILVARG – EXECUTIVE DIRECTOR, CITY PLAN

NEW HAVEN, CONNECTICUT  
STATE PROJECT NO.  
92-570/651  
FEDERAL AID PROJECT NO.  
1092(120)

**CITY PROJECT MANAGER – DONNA HALL**

**LANGAN** *Prime Consultant, Civil, Geotechnical & Marine Engineering,  
Permitting, Landscape Architecture & Survey*  
ENGINEERING & ENVIRONMENTAL SERVICES

**GREGG WIES & GARDNER ARCHITECTS – *Boathouse Architect***

**WALLACE ROBERTS AND TODD – *Master Planner***

**DEAN SAKAMOTO ARCHITECTS – *Interpretive Design and Way Finding***

**SPIEGEL ZAMECNIK & SHAH – *Structural Engineer***

**ARCHITECTURAL ENGINEERS – *Mechanical, Electrical and Plumbing Engineer***

**BEACON DESIGN INTERNATIONAL – *Wave Action Analysis and Floating Dock Designer***

**ELLANA, INC. – *Scheduler and Cost Estimator***

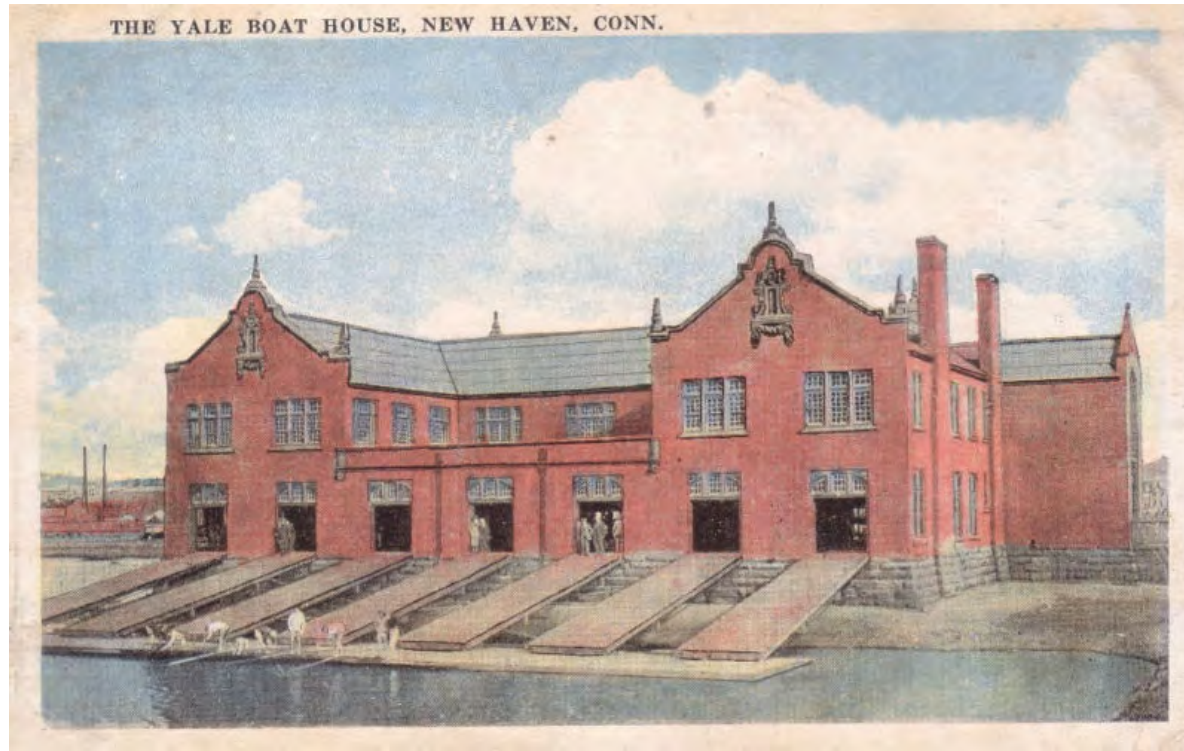
**ATELIER TEN – *Lighting Consultant***

**ALDERSON ENGINEERING – *Geothermal Engineer***



The City of New Haven is set to begin building a federally-funded community boathouse on the former site of Canal Dock. Currently, much of New Haven's extensive waterfront property is devoted to maritime industry, such as shipping operations and tank farms. None of these areas, however, is large enough or well-equipped to support active water-dependent recreation activities or educational opportunities. In short, there is nowhere that fills the identified need for a community recreation center that actively uses New Haven's harbor. The Boathouse at Canal Dock will provide dock elements to support multiple boat types and sizes and provide for public access to the harbor. Environmental, cultural, and historical education will also be a key component of programming at the boathouse.





The current project serves to mitigate the demolition of the historic Yale (Adee) Boathouse that sat across New Haven Harbor from the Canal Dock site, at 74 Forbes Avenue. The Adee Boathouse was demolished by the Connecticut Department of Transportation in 2007 as part of the I-95 New Haven Harbor Crossing Corridor Improvement Program. Elements of the historic boathouse will be prominently featured in the design of the Canal Dock Boathouse, helping the building's otherwise-modern design to fit in with the historical context of the region.





**Former Adee  
Boathouse**

**The Boathouse  
at Canal Dock**

**Location Map**





Project Location



July 2012 Site





CANAL DOCK BOATHOUSE

GREGG WIES &  
GARDNER  
ARCHITECTS, LLC

July 2012 Building: Perspectives





GREGG WIES &  
GARDNER  
ARCHITECTS, LLC

July 2012 Building: Perspectives





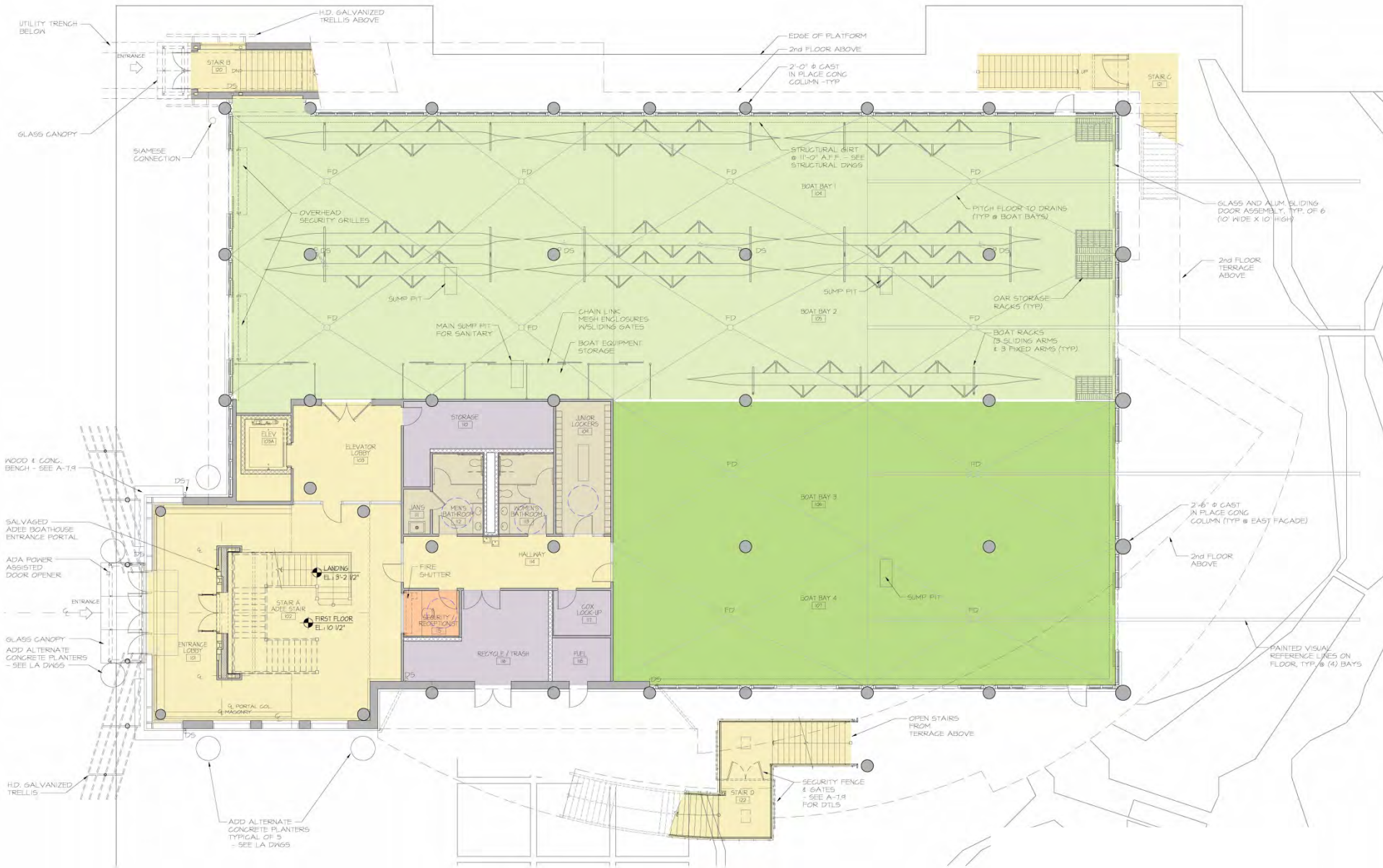
GREGG WIES &  
GARDNER  
ARCHITECTS, LLC

July 2012 Building: Perspectives





July 2012 Building: Second Floor Plan



July 2012 Building: First Floor Plan



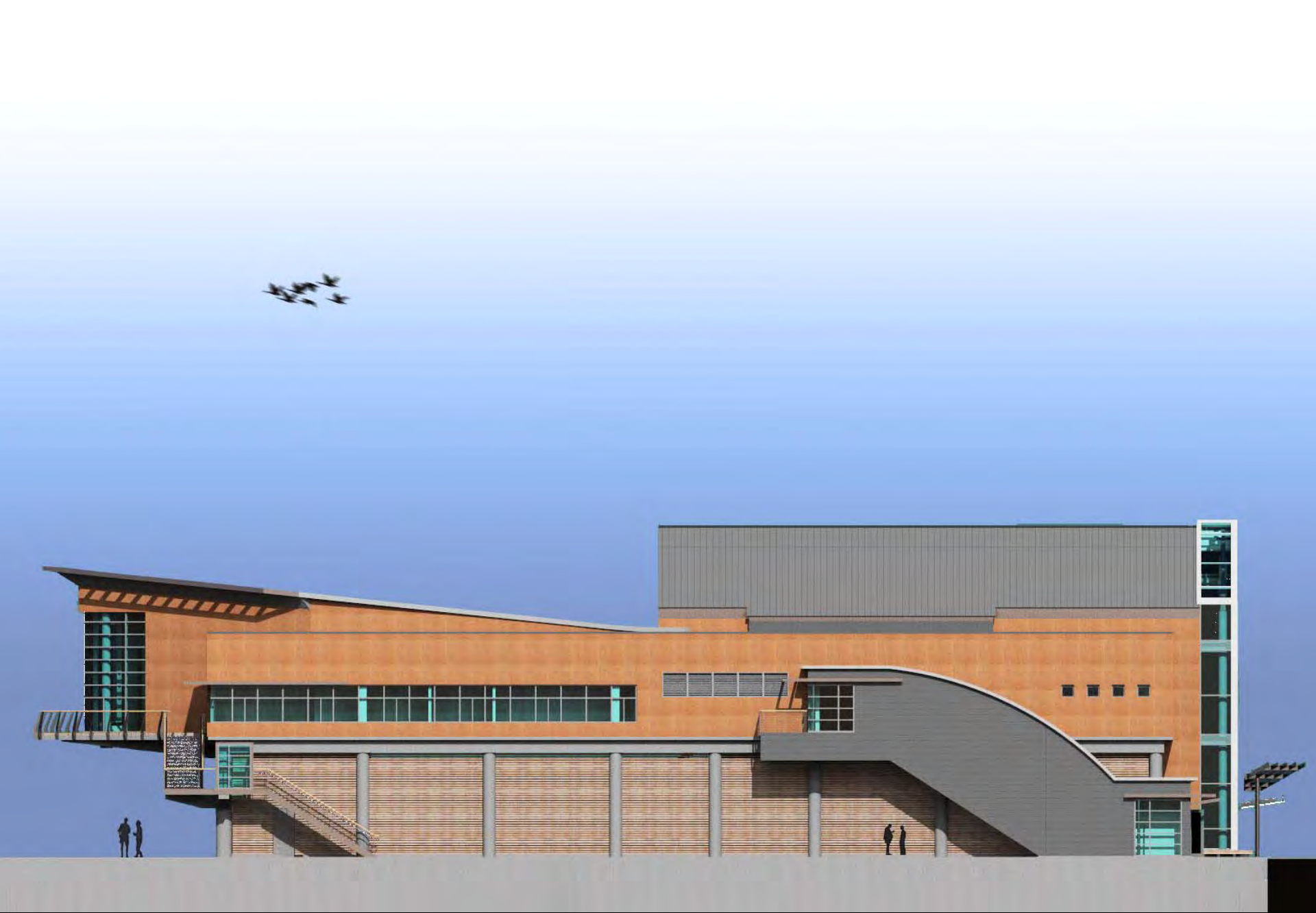


July 2012 Building: West Elevation



July 2012 Building: East Elevation



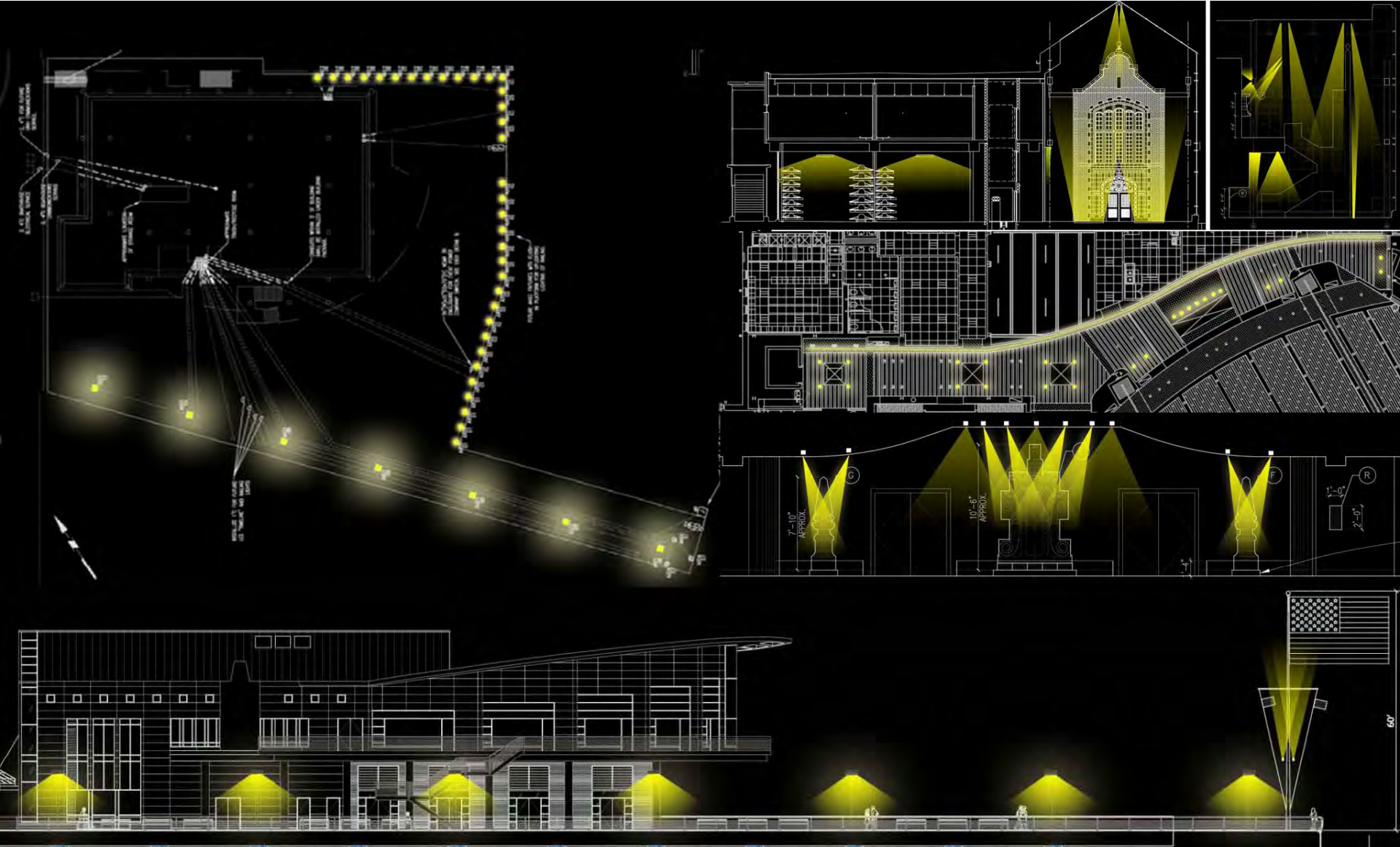


July 2012 Building: North Elevation

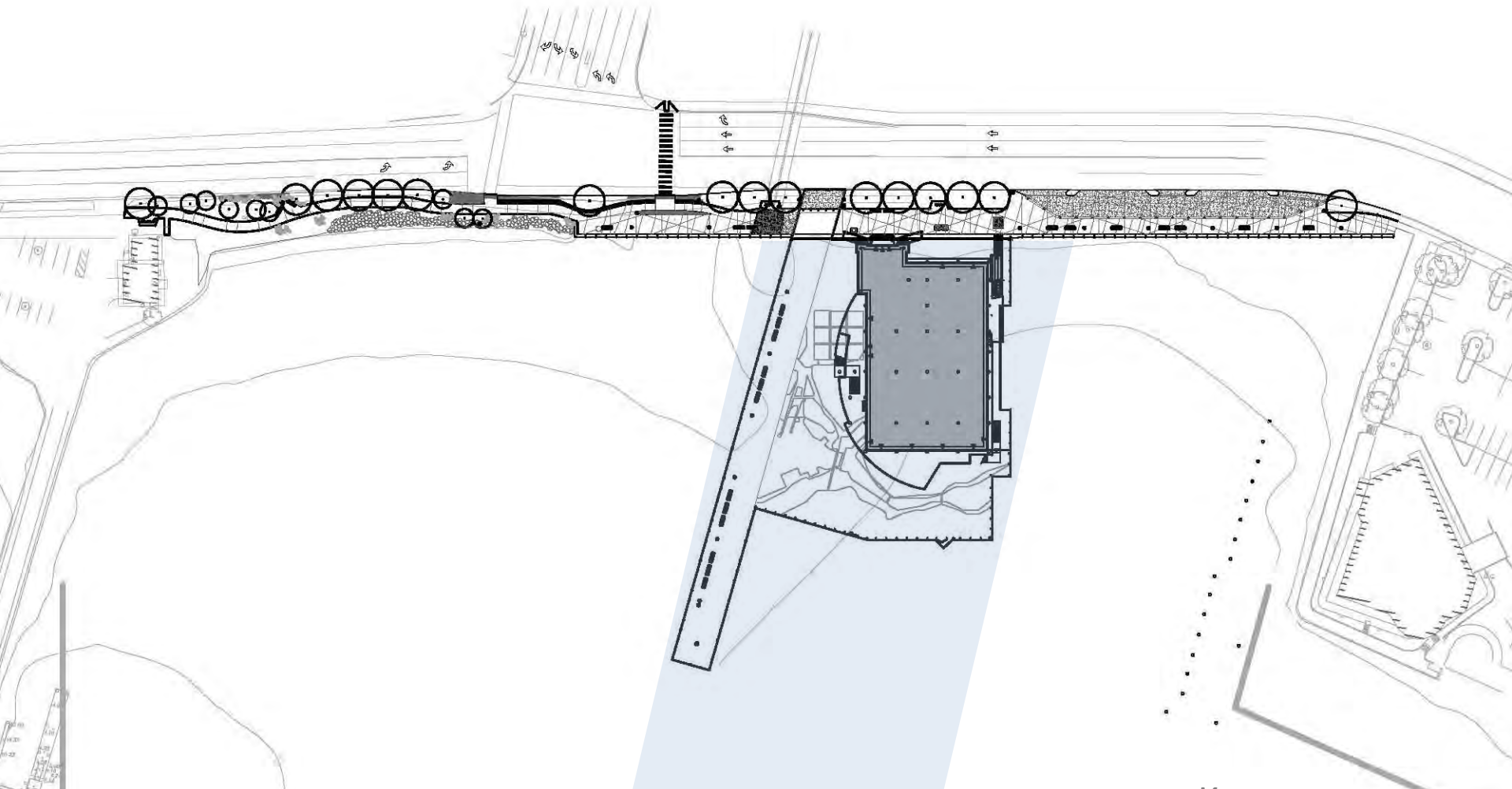


July 2012 Building: South Elevation





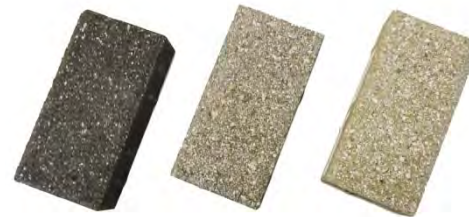
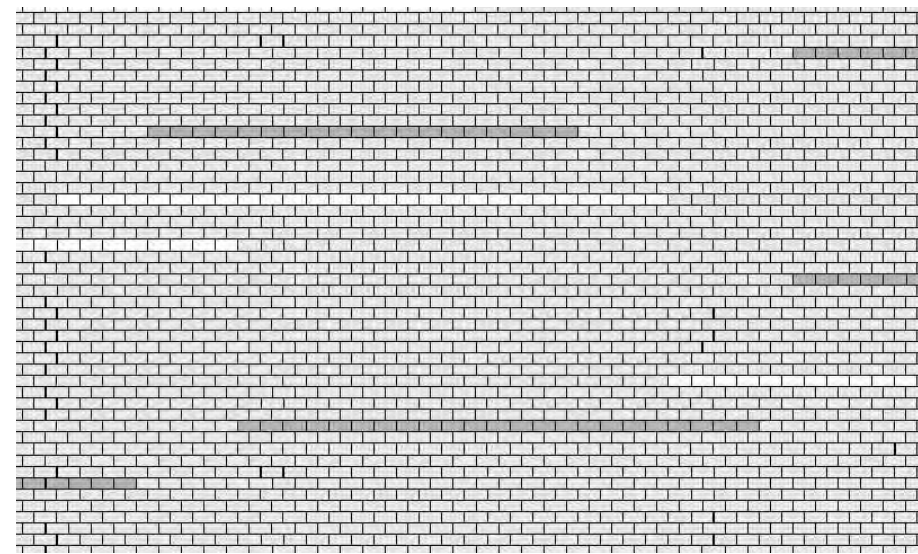
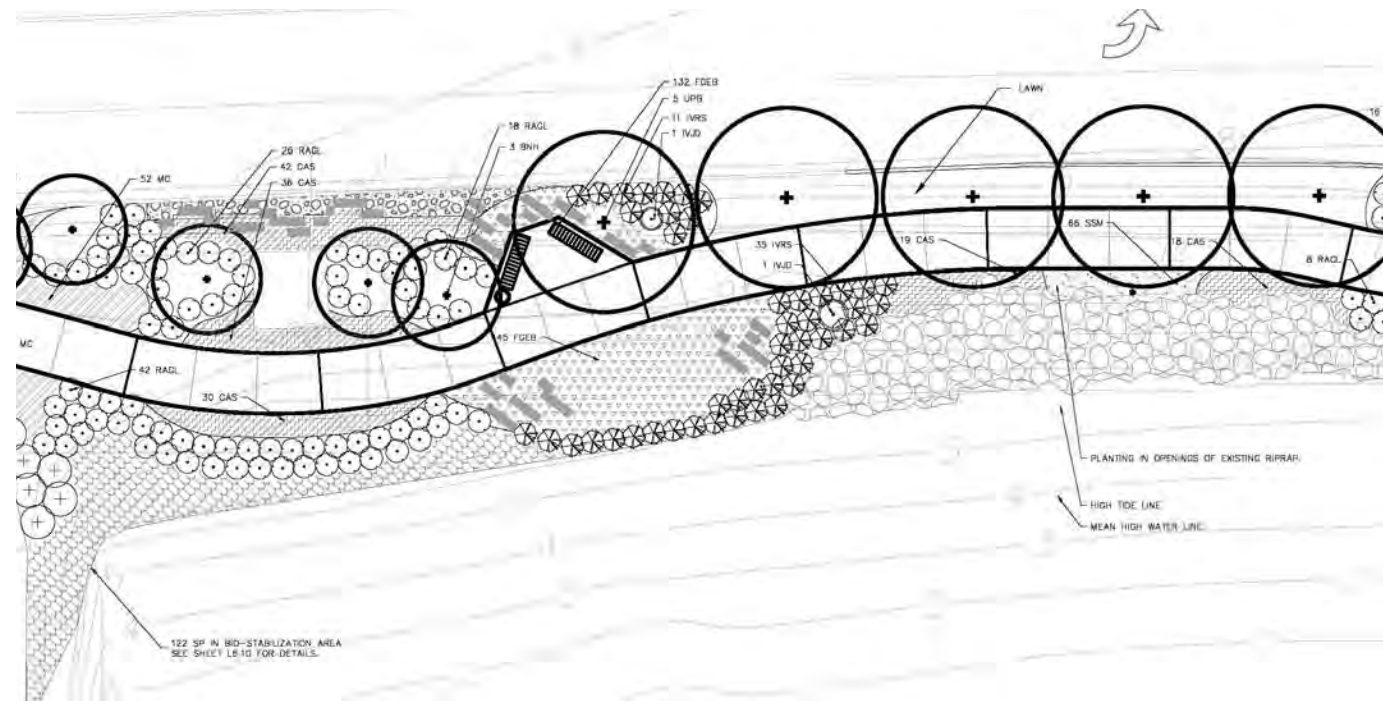
Lighting

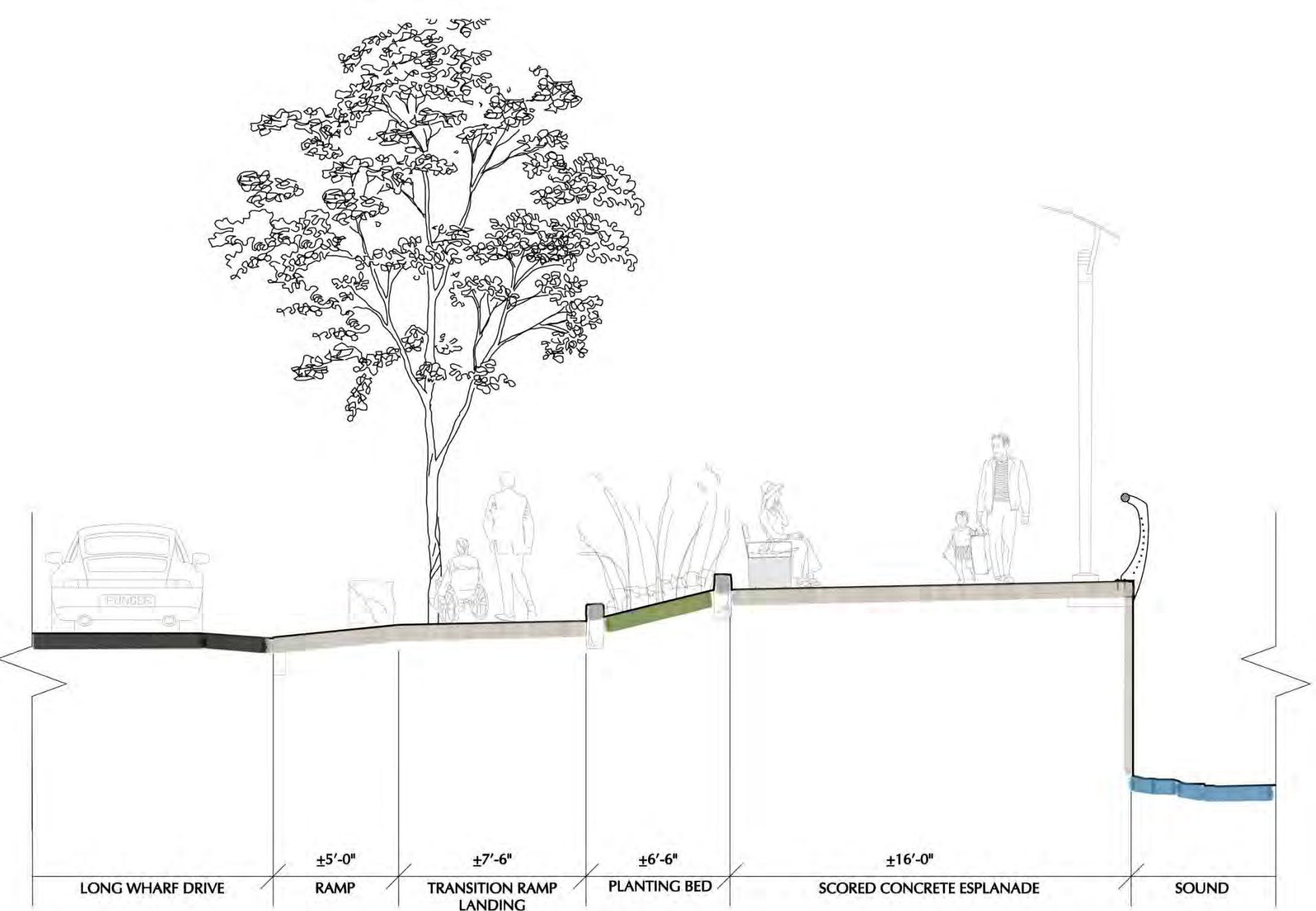


Section & Area Key Plan

- Key
- Platform
  - Upland
  - Trail







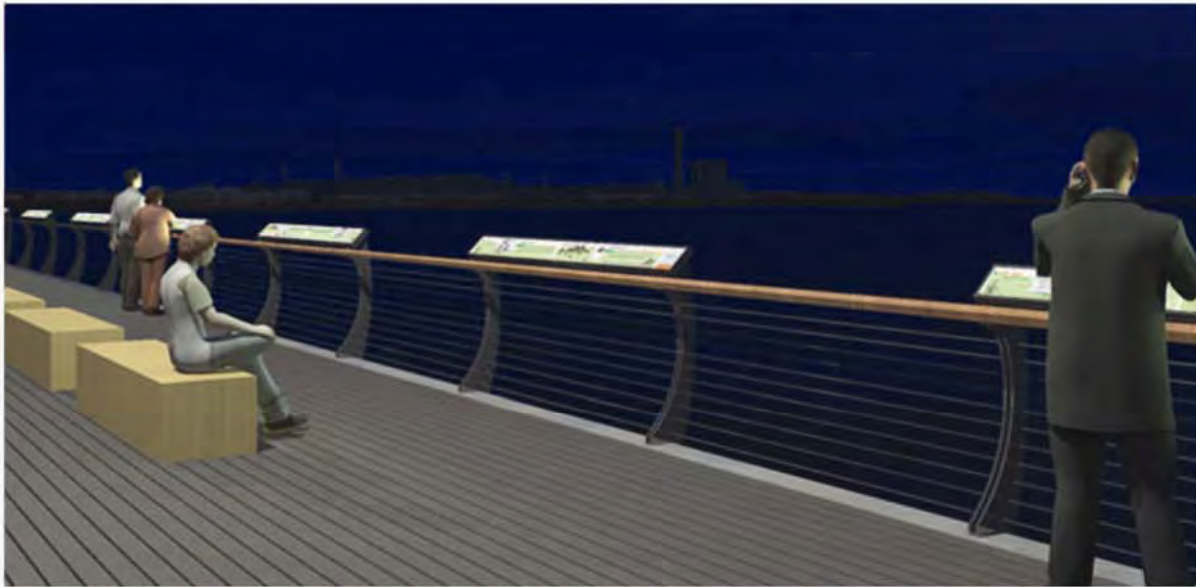
July 2012 Landscape Architecture





**SITE MAP**





TIMELINE







# STEAMBOATS AND

Travel in New Haven's early years is limited century by the emergence of steamboats and



Detail of New Haven Steamboat Advertisement, 1890. New Haven Museum

**1815** The steamboat transported New Haven



NATURAL HISTORY OF NEW HAVEN



ESTABLISHING A COLONY



HARBOR EXPANSION



STEAMBOATS AND CANALS



RAILROADS



FROM INDUSTRY TO RECREATION



RETHINKING THE WATERFRONT

## TIMELINE PANEL DETAIL

DEAN **sakamoto**  
ARCHITECTS LLC

## FIRST FLOOR

1.0 - "From the Adee Memorial Boathouse to the Boathouse at Canal Dock"

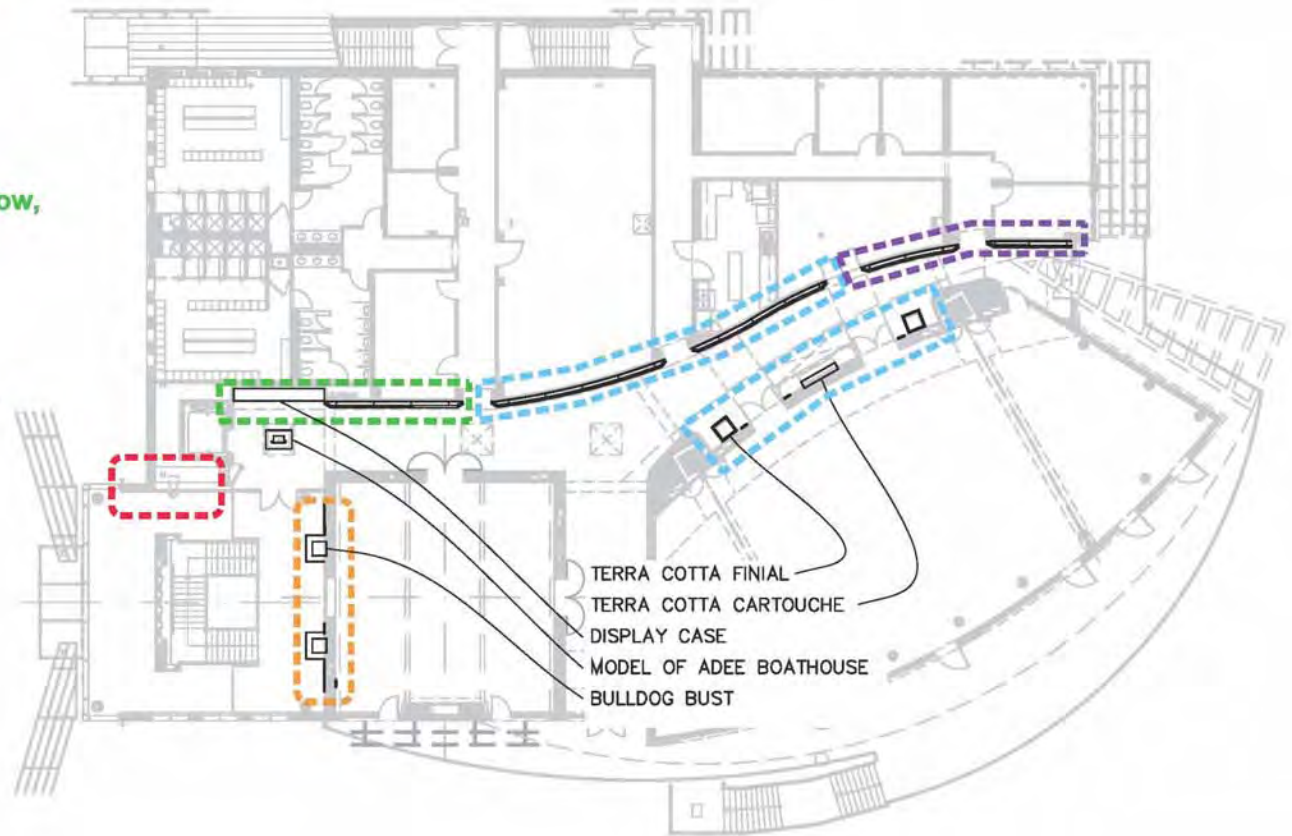
## SECOND FLOOR

2.0 - "Two Boathouses"

3.0 - "Collegiate Rowing Then and Now, 1843-Present"

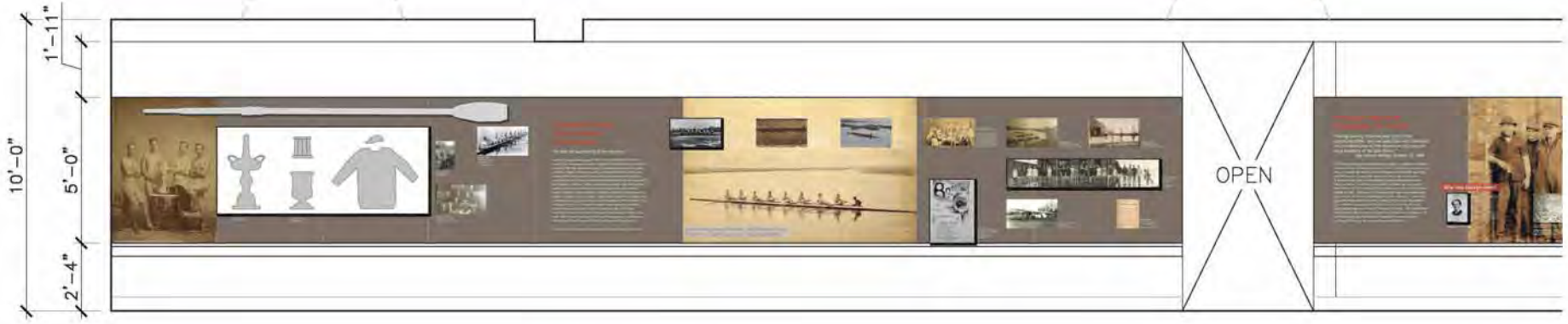
4.0 - "Adee Memorial Boathouse 1911-2007"

5.0 - "The Boathouse at Canal Dock 1998-Present"

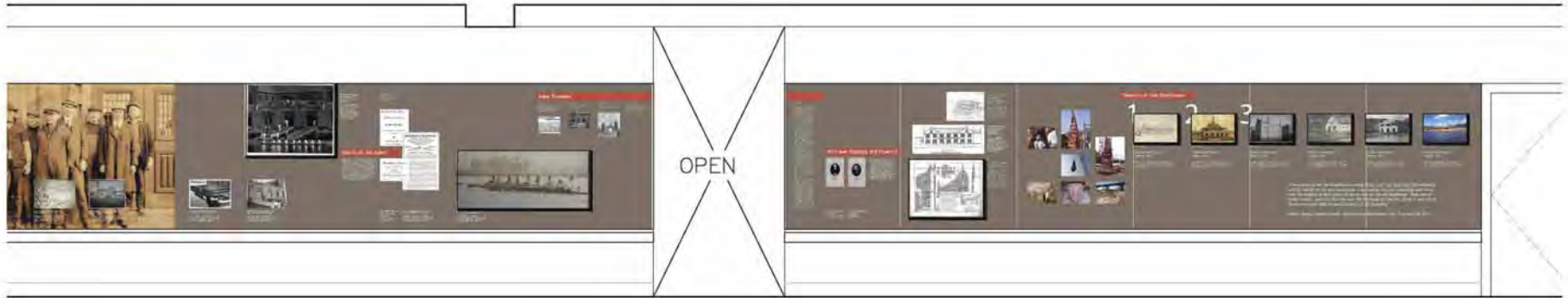




THEME 3



THEME 4

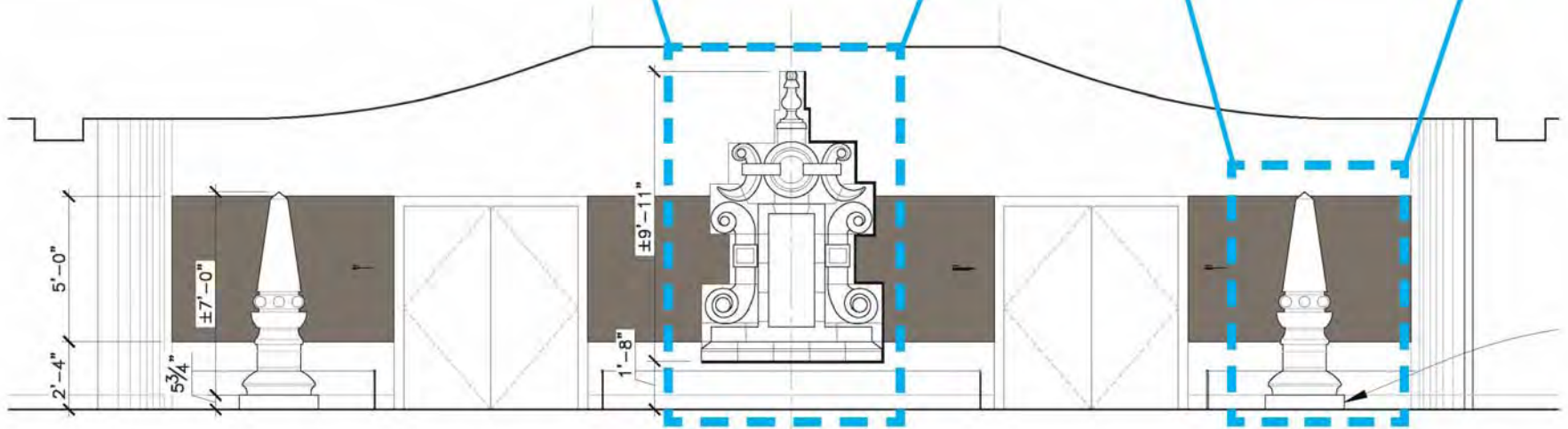


ADEE BOATHOUSE EXHIBITION

CARTOUCHE

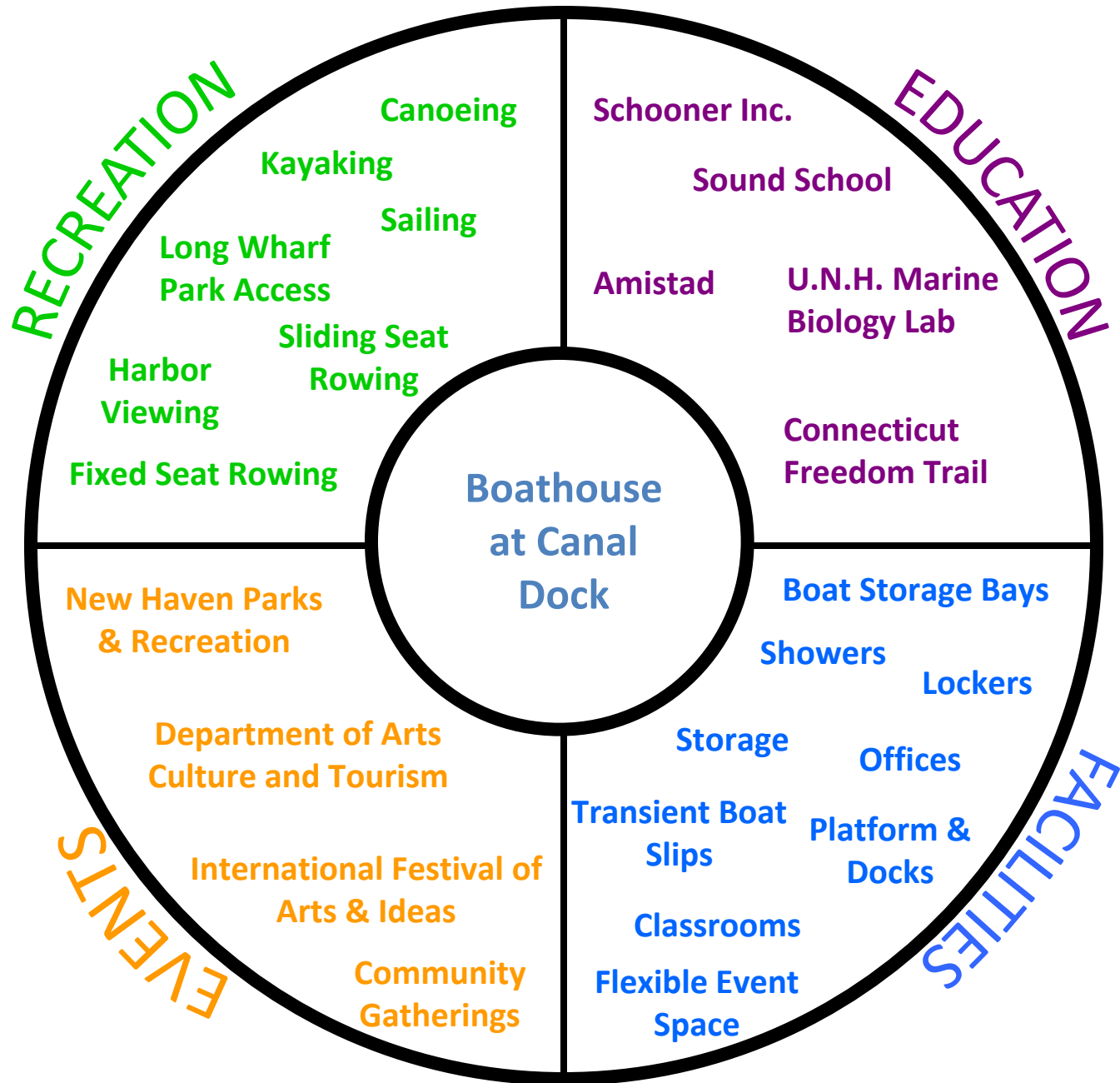


FINIAL



ADEE BOATHOUSE EXHIBITION





# Site Uses & Facilities

# Community Rowing <sup>Inc.</sup>



- The City of New Haven has hired **Community Rowing, Inc.** of Boston to provide a Community Boating Plan; the plan will include
  - Staffing proposals
  - Communication plans
  - Community outreach strategies
  - Leadership blueprints
  - Detailed three year financial plan



# Community Rowing <sup>Inc.</sup>

- Key elements of the program will involve:
  - youth development at local high schools and colleges
  - adult and military veteran programming
  - a special focus on those traditionally under-represented in on-water sports.



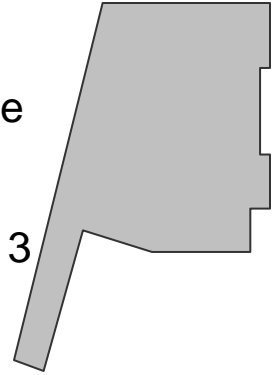
# Community Rowing Inc.



- In the last 12 years, their Girls Row Boston youth program has achieved 100% college attendance. 99% are accepted to 4-year colleges.
- CRI reached over 1,000 individuals in 2011 in free programs for underserved populations including adaptive rowing, veterans rowing, and other programs.



# Platform Schedule



# Building Schedule



# Project Timeline