



SLRCONSULTING.COM

City of New Haven 1-Way to 2-Way Conversion Study

SCRCOG
SOUTH CENTRAL REGIONAL
COUNCIL OF GOVERNMENTS



First Public Meeting

May 16, 2023



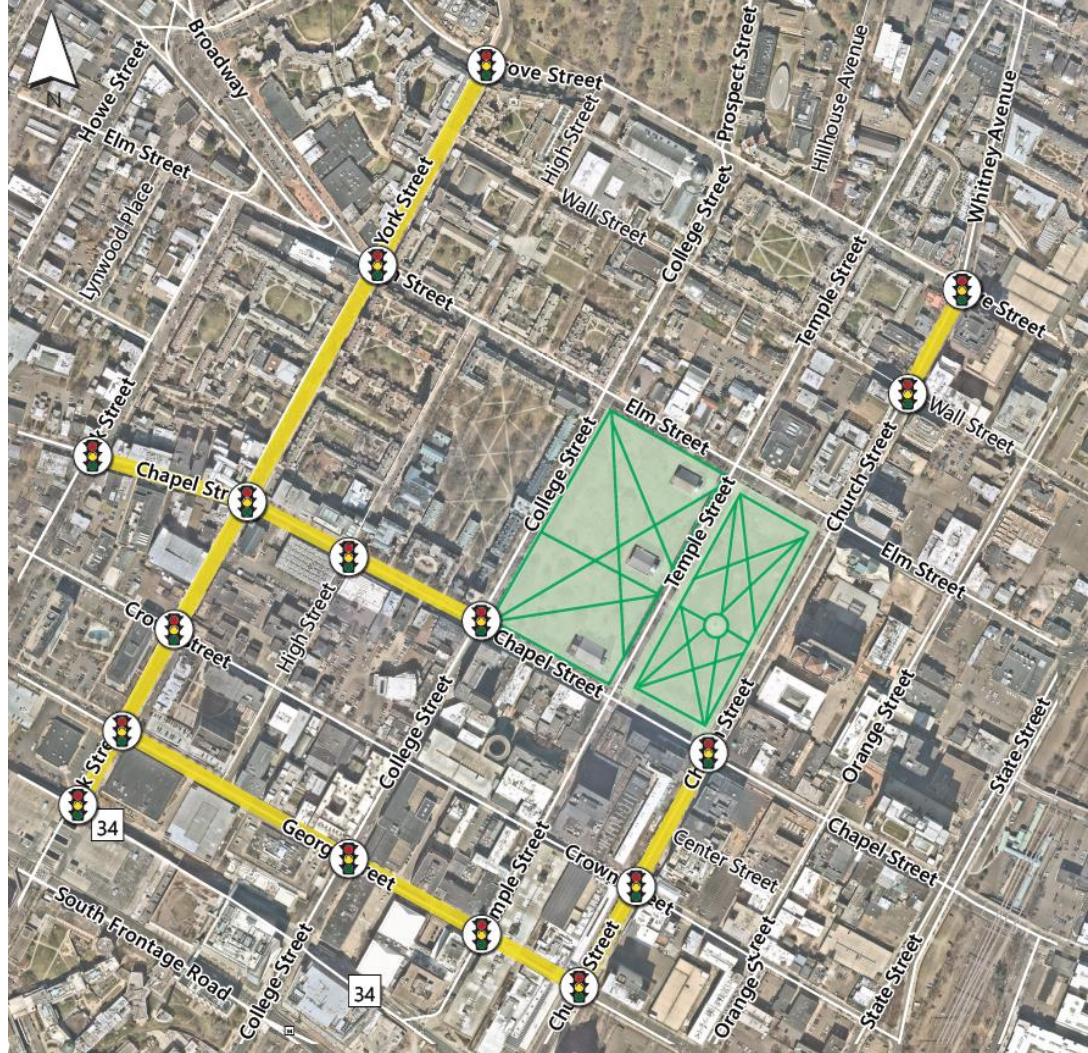
Introduction

Goal:

- Convert streets from 1-way to 2-way to improve safety and efficiency for all transportation modes

Objectives:

- Align with Vision Zero safety principles & Safe Routes For All (SRFA) Active Transportation Plan
- Accommodate sustainable modes of transportation
- Improve traffic circulation, safety, and mobility





Agenda

- **Project Timeline**
- **Previous Studies**
- **Study Area – Infrastructure and Characteristics**
 - **Church Street**
 - **York Street**
 - **Chapel Street**
 - **George Street**
- **Question & Answer / Public Input**
- **Next Steps**





Timeline



November 2022

- * Project Kickoff



Winter & Spring 2023

- * Compile Study area data
- * Review previous studies
- * Meet with City of New Haven and SCRCOG staff
- * **First Public Meeting**



Summer 2023

- * Develop Future 2-way Traffic Analysis
- * Develop concepts
- * **Second Public Meeting**
- * Continue to analyze public input & refine concepts

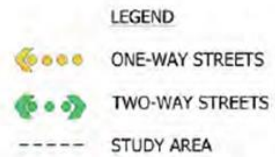


Fall & Winter 2023

- * Develop preliminary engineering-level plans for preferred concepts
- * Conduct high-level construction cost estimates
- * Prepare Implementation Plan & Draft Study Report
- * Submit Final Study Report

Previous Studies

One-Way to Two-Way Conversion Study (2013-2014)



Study Area Map from the 2014 Two-Way Conversion Final Report

After a week-long community design charrette, the City learned that residents support a 1-way to 2-way street conversion that **slows traffic & makes streets easier to navigate.**



Previous Studies

Move New Haven Study (2019)

- Made recommendations about how to improve New Haven's existing "hub-and-spoke" bus route system to one that is more convenient to bus riders and more operationally efficient.
- Among the recommendations were to create 2 **Bus Rapid Transit (BRT)** routes that pass through the study area – to/from Hamden and to/from West Haven



MOVE NEW HAVEN TRANSIT MOBILITY STUDY FINAL REPORT



City of **New Haven**
CONNECTICUT



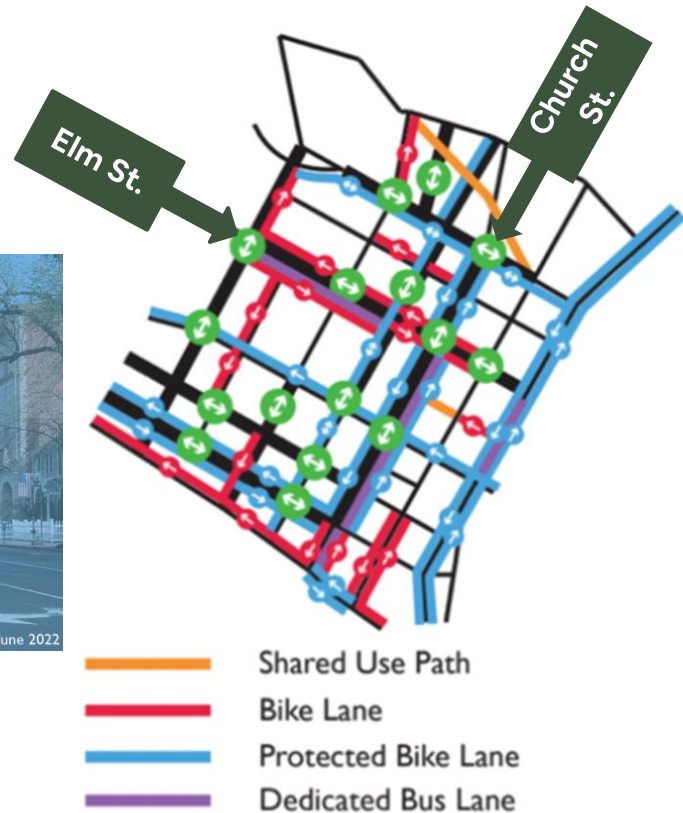
SEPTEMBER 2019

Previous Studies

Safe Routes for All Active Transportation Plan (2022)

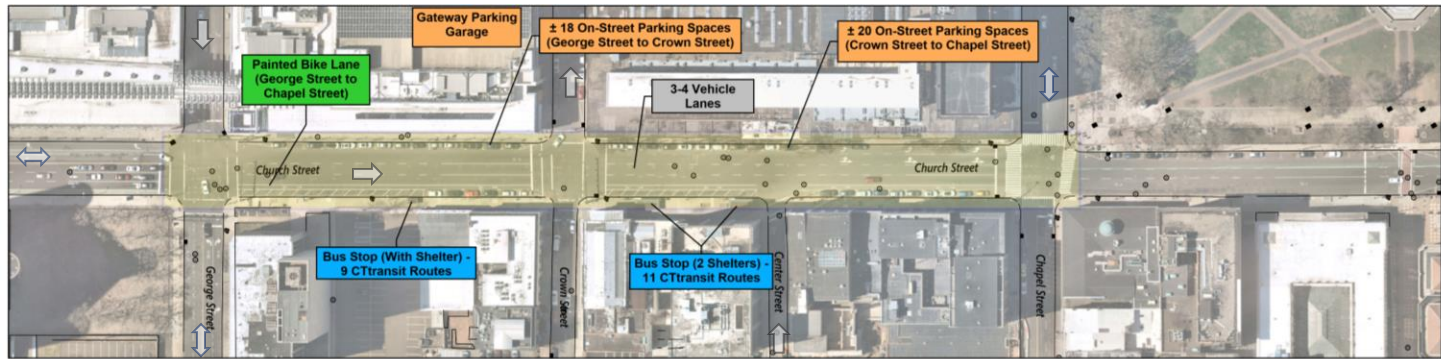
The Plan recommended:

- Prioritizing street safety at the top 10 most dangerous intersections for pedestrians by 2027 – including Church & Chapel.
- Adjusting pedestrian signal timing at intersection legs with 4 or more lanes to provide more time to cross.
- Adding protected bike lanes wherever feasible, especially along the most dangerous corridors –including Chapel St.

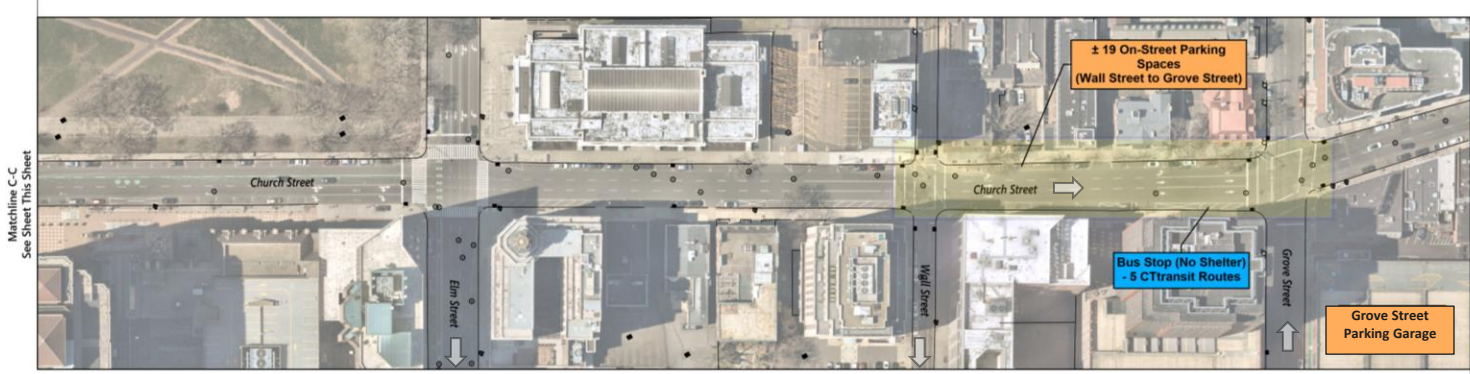


Map of Long-Term 1-Way Street Conversions

Church Street



Matchline C-C
See Sheet This Sheet



Matchline C-C
See Sheet This Sheet

Church Street Corridor Existing Characteristics New Haven, CT

Date: May 2023

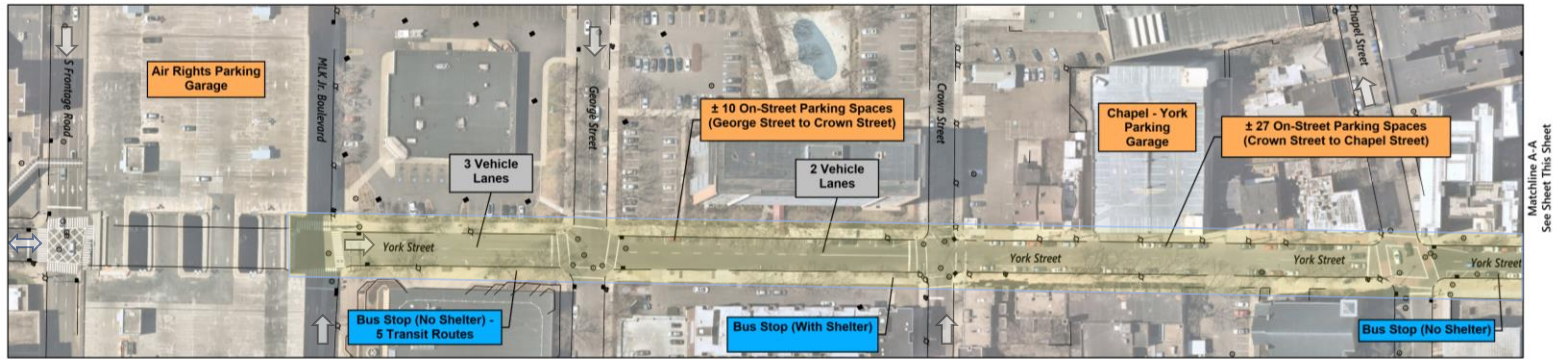
 = Church Street Study Corridor

± 18 C Transit Routes + Yale Shuttle

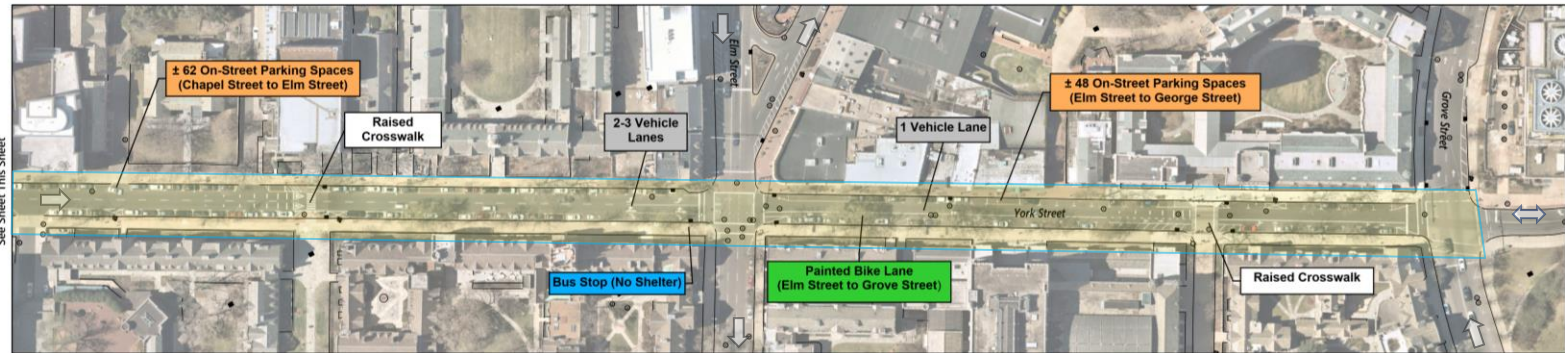
± 57 On-Street Parking Spaces along Church Street Study Corridor



York Street



Matchline A-A
See Sheet This Sheet



Matchline A-A
See Sheet This Sheet

York Street Corridor Existing Characteristics New Haven, CT

Date: May 2023

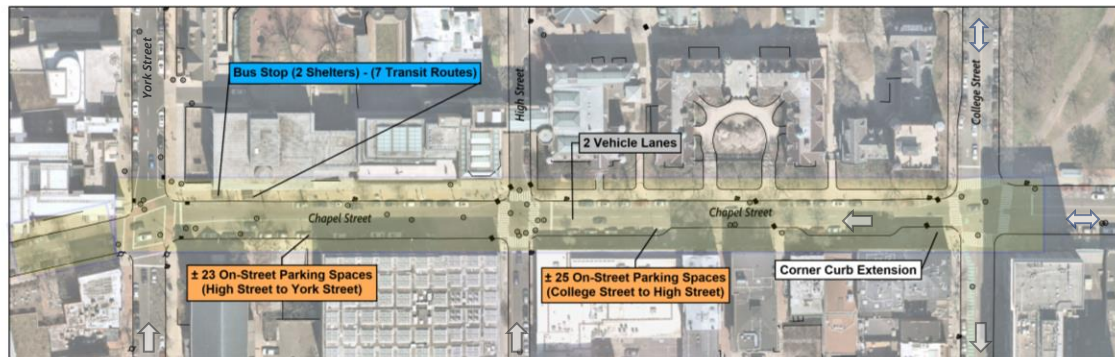
 = York Street Study Corridor

± 5 CTtransit Routes + Yale Shuttle

± 147 On-Street Parking Spaces along
York Street Study Corridor



Chapel Street



Chapel Street Corridor Existing Characteristics New Haven, CT

Date: May 2023

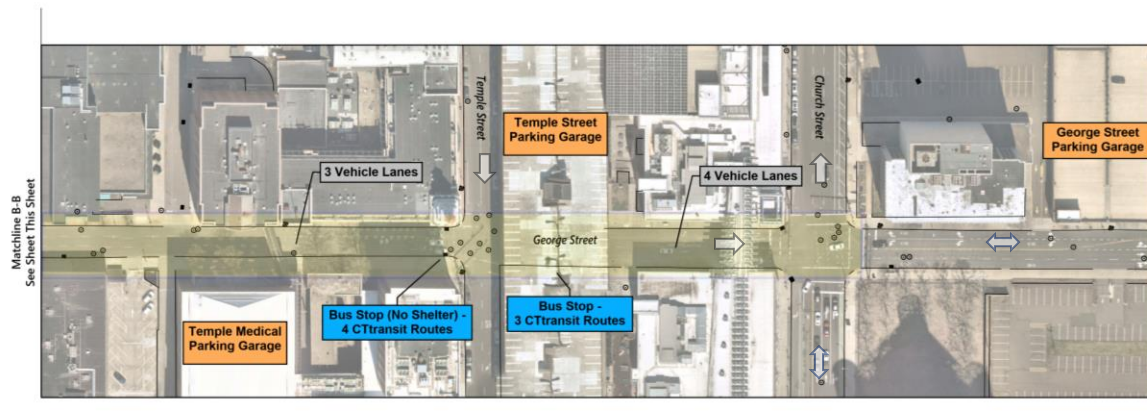
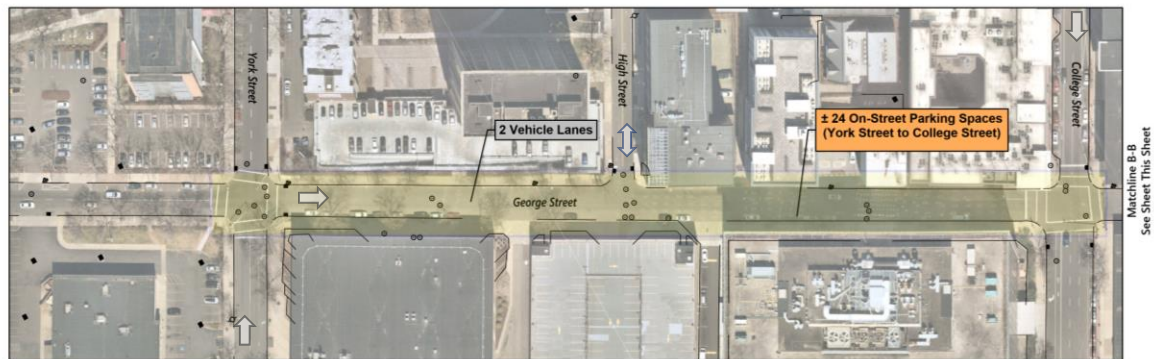
 = Chapel Street Study Corridor

± 7 CTtransit Routes

± 78 On-Street Parking Spaces along
Chapel Street Study Corridor



George Street



George Street Corridor Existing Characteristics New Haven, CT

Date: May 2023

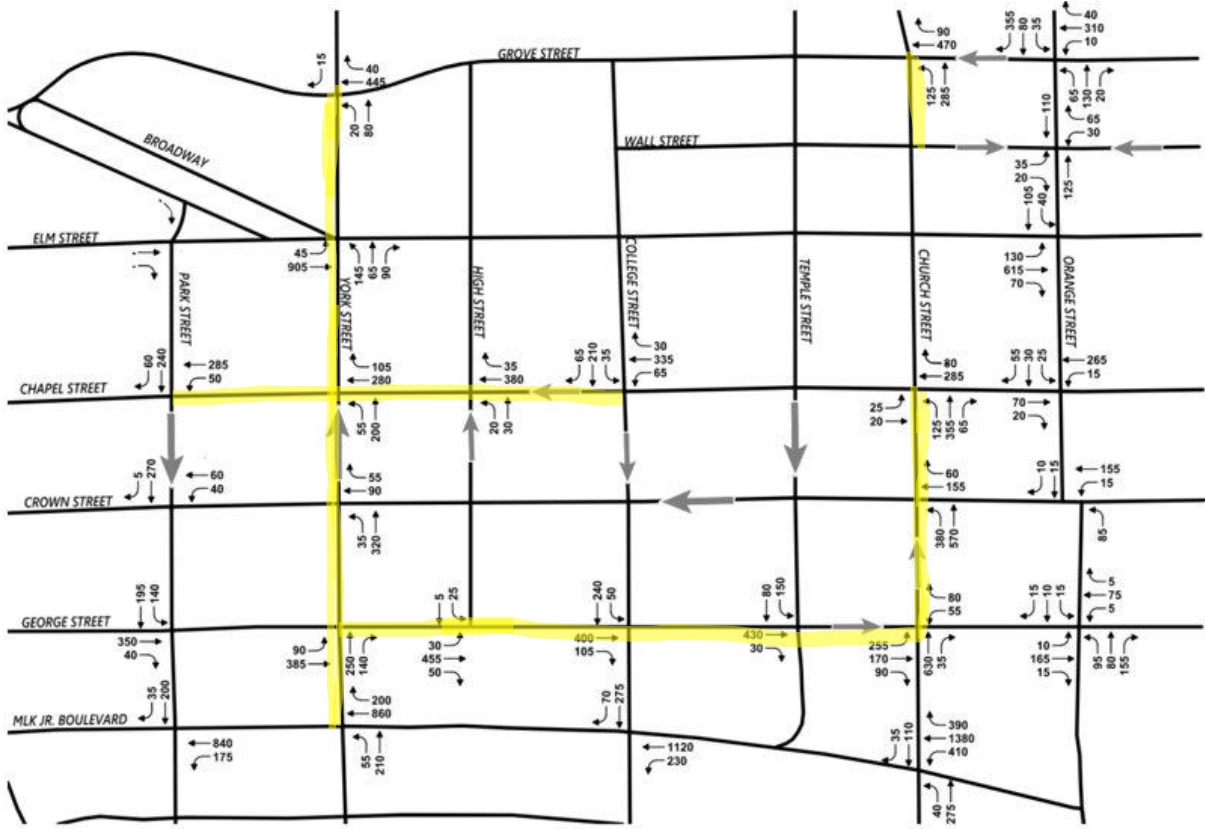
 = George Street Study Corridor

± 6 CTtransit Routes

± 24 On-Street Parking Spaces along
George Street Study Corridor



Downtown New Haven Traffic Volumes



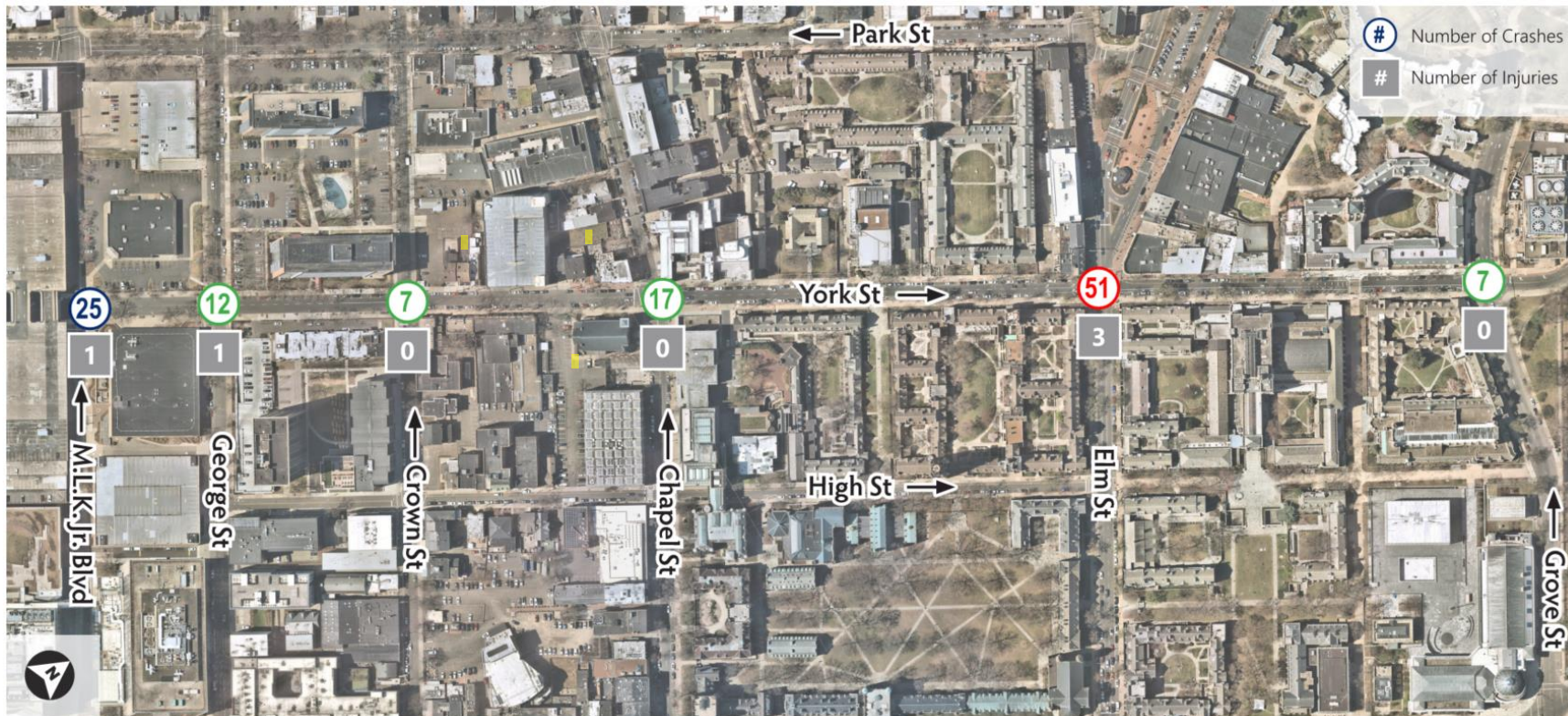
Church Street Crash History (through 2022)



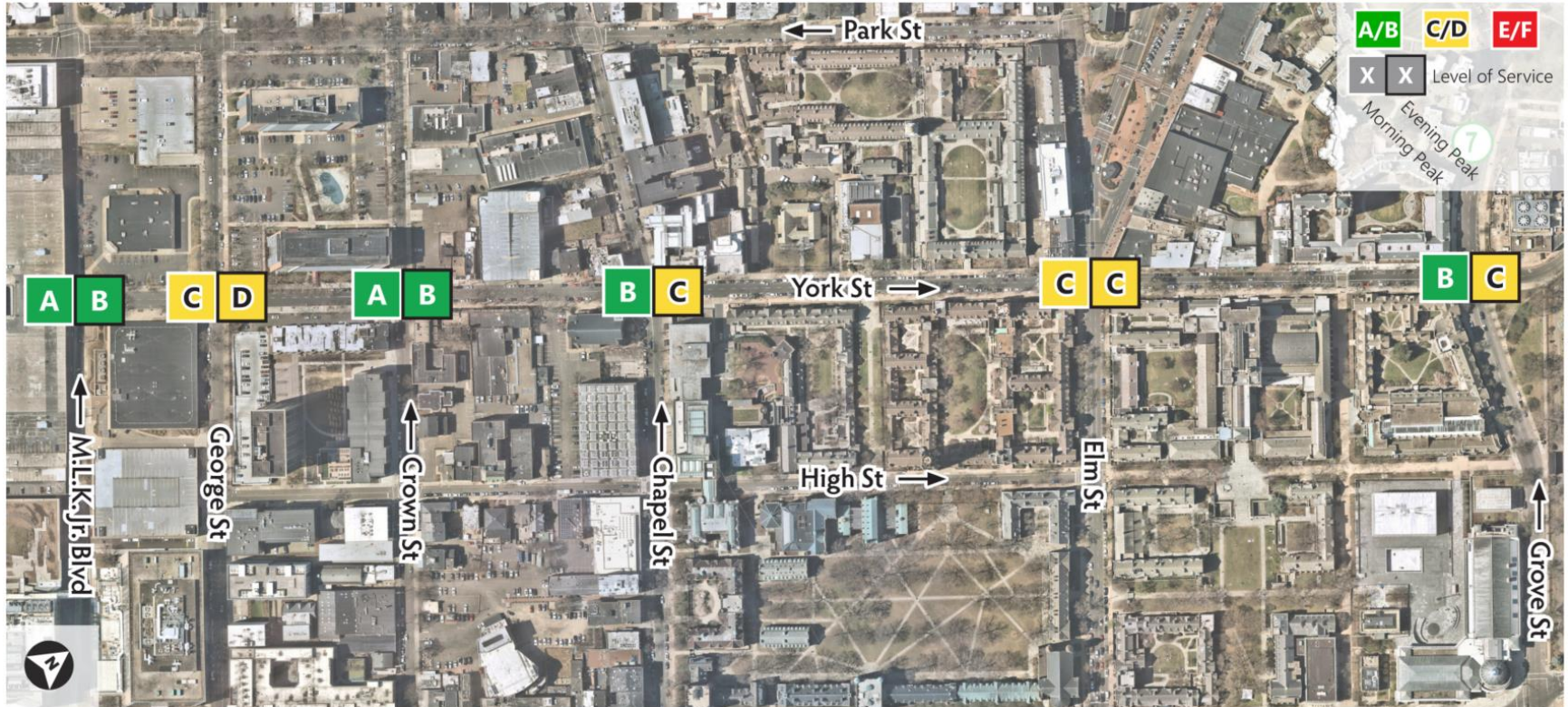
Church Street Traffic Operations



York Street Crash History (through 2022)



York Street Traffic Operations



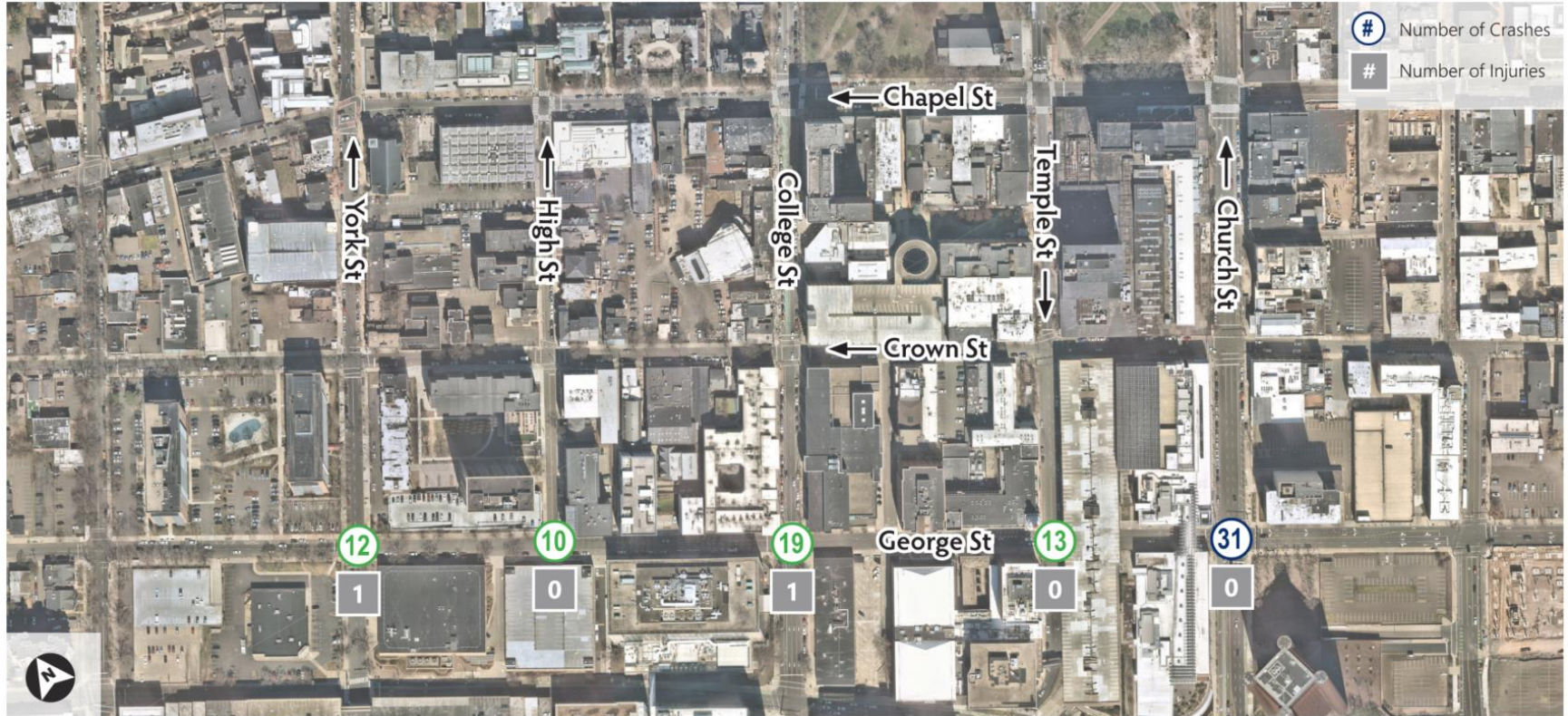
Chapel Street Crash History (through 2022)



Chapel Street Traffic Operations



George Street Crash History (through 2022)



George Street Traffic Operations





Next Steps



November 2022

- * Project Kickoff



Winter & Spring 2023

- * Compile Study area data
- * Review previous studies
- * Meet with City of New Haven and SCRCOG staff
- * **First Public Meeting**



Summer 2023

- * Develop Future 2-way Traffic Analysis
- * Develop concepts
- * **Second Public Meeting**
- * Continue to analyze public input & refine concepts



Fall & Winter 2023

- * Develop preliminary engineering-level plans for preferred concepts
- * Conduct high-level construction cost estimates
- * Prepare Implementation Plan & Draft Study Report
- * Submit Final Study Report

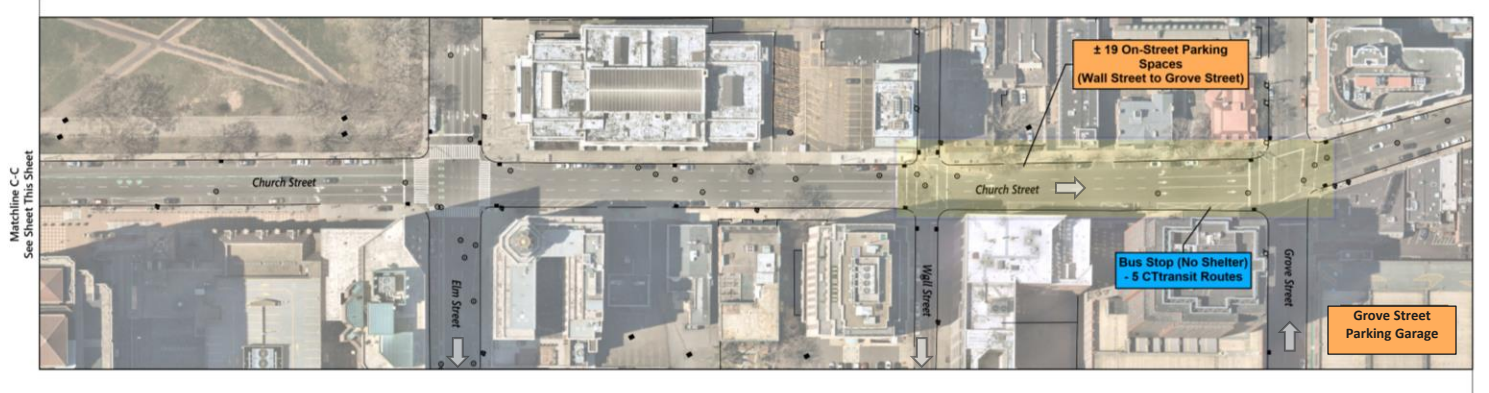
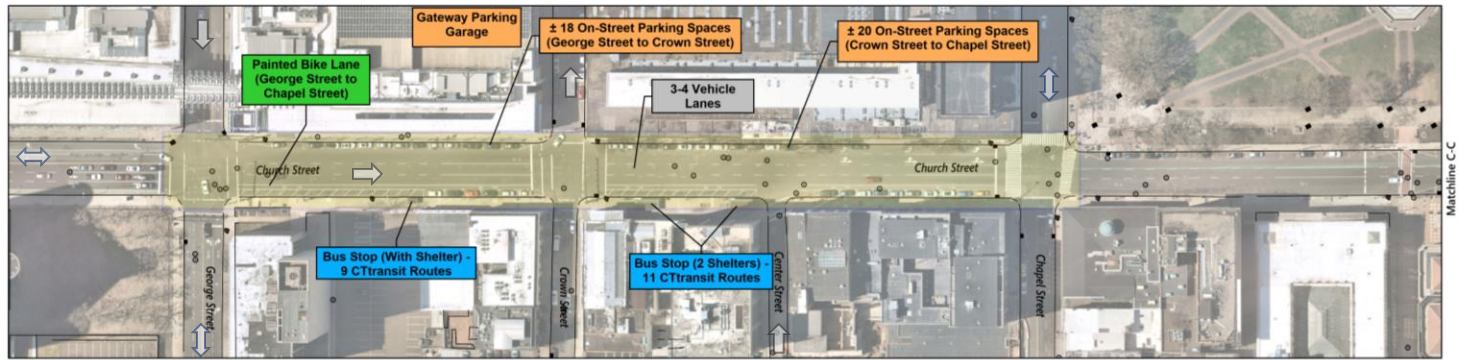


Question & Answer



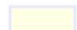
Questions or
Comments
about the
Church Street
Corridor

Church Street



Church Street Corridor Existing Characteristics New Haven, CT

Date: May 2023

 = Church Street Study Corridor

± 18 CTransit Routes + Yale Shuttle

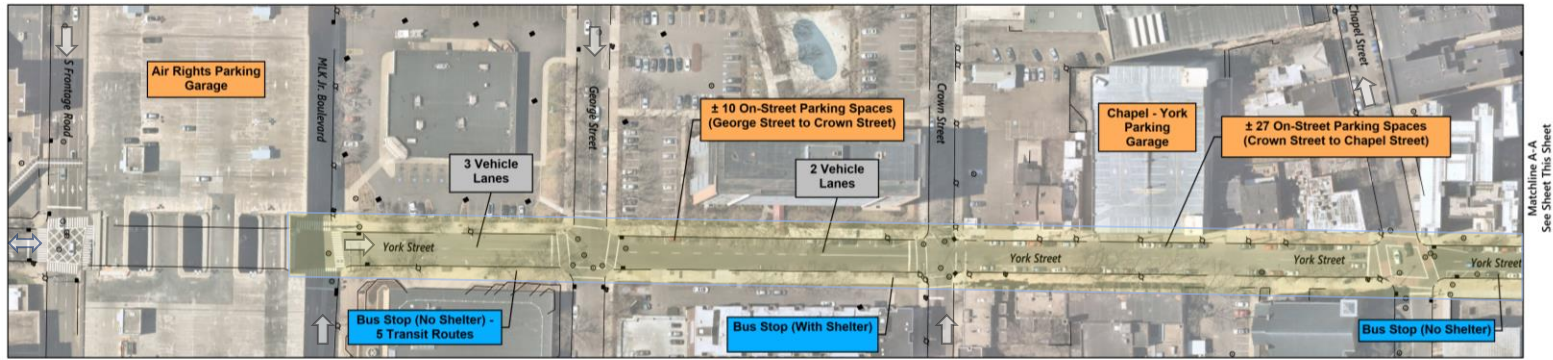
± 57 On-Street Parking Spaces along Church Street Study Corridor



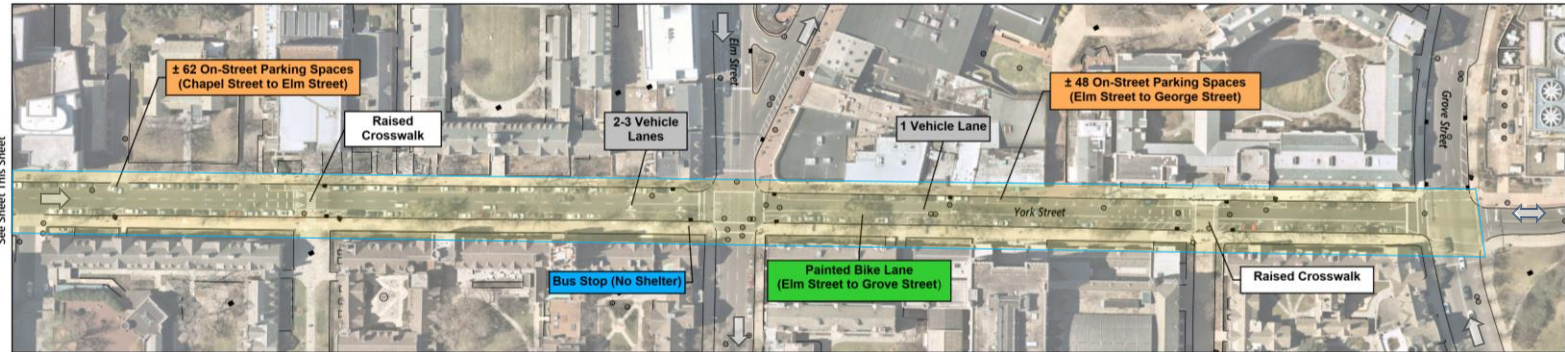


Questions or
Comments
about the
**York Street/
Chapel Street**
Corridors

York Street



Matchline A-A
See Sheet This Sheet



Matchline A-A
See Sheet This Sheet

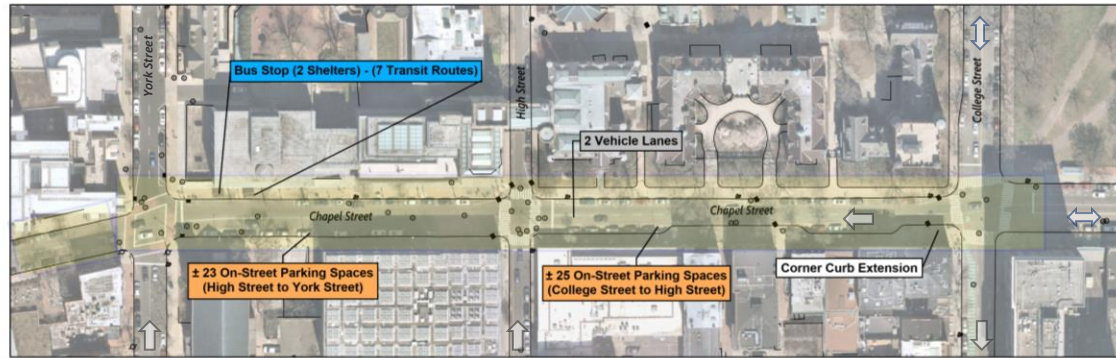
York Street Corridor Existing Characteristics New Haven, CT

Date: May 2023

- = York Street Study Corridor
- ± 5 CTtransit Routes + Yale Shuttle
- ± 147 On-Street Parking Spaces along York Street Study Corridor



Chapel Street



Chapel Street Corridor Existing Characteristics New Haven, CT

Date: May 2023

 = Chapel Street Study Corridor

± 7 CTtransit Routes

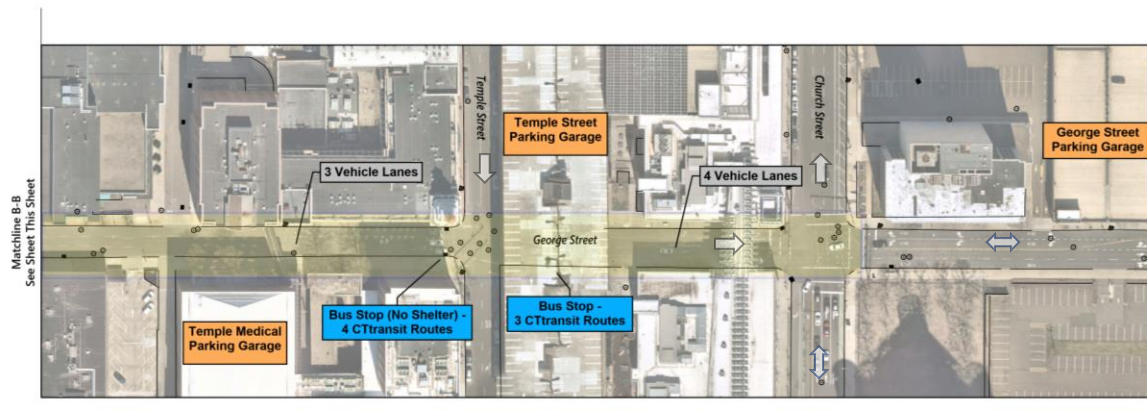
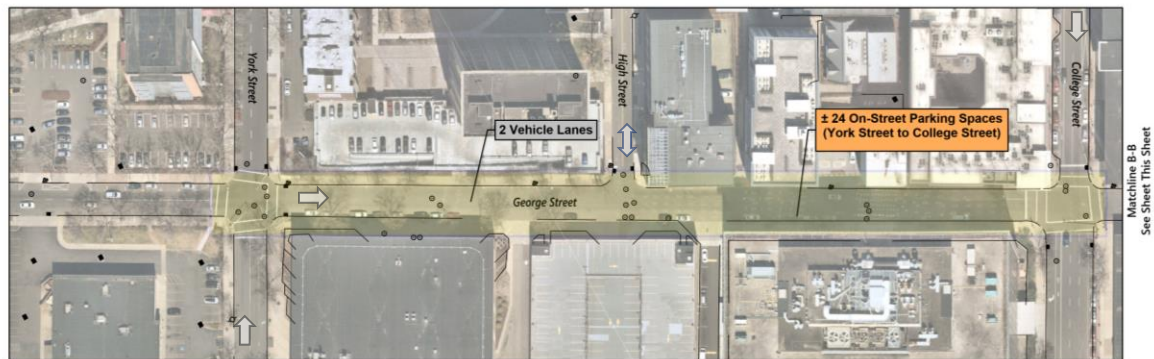
± 78 On-Street Parking Spaces along
Chapel Street Study Corridor





Questions or
Comments
about the
George Street
Corridor

George Street



George Street Corridor Existing Characteristics New Haven, CT

Date: May 2023

 = George Street Study Corridor

± 6 CTtransit Routes

± 24 On-Street Parking Spaces along
George Street Study Corridor





The City of New Haven's website www.newhavenct.gov will provide project updates and announcements and includes a comment form for those who couldn't attend today's meeting or have additional comments.



Questions?

Contact:

Sandeep Aysola (203) 946-8067
Director, New Haven Transportation, Traffic & Parking saysola@newhavenct.gov

Bijan Notghi (203) 946-8069
Deputy Director of Traffic Operations
bnotghi@newhavenct.gov

Provide your additional comments here

<https://bit.ly/3pPrJt2>





END