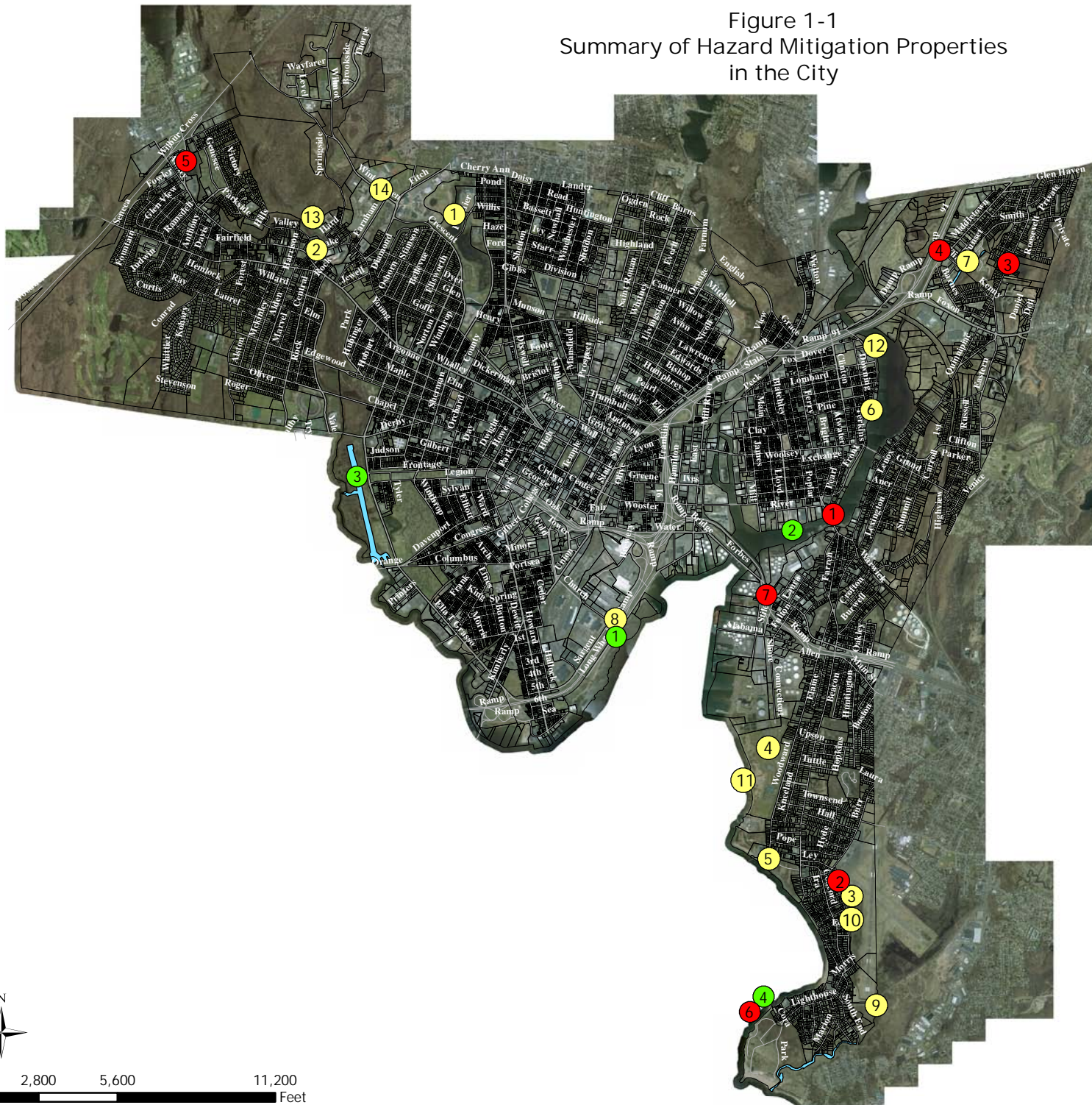




Figure 1-1
Summary of Hazard Mitigation Properties
in the City



Legend

Past Accomplishments (Since 2005)

- ① Beaver Ponds Feasibility Study
- ② Blake Street Project
- ③ Dean Street Project
- ④ East Shore Park
- ⑤ Fort Hale Park
- ⑥ Front Street
- ⑦ Hemingway Creek
- ⑧ Long Wharf Drive
- ⑨ Morris Creek
- ⑩ Morris Creek Channelization
- ⑪ Shoreline Stabilization East Shore
- ⑫ Shoreline Stabilization Dover Beach
- ⑬ West River Channelization
- ⑭ Wintergreen Development

Current Projects

- ① Long Wharf Park
- ② River Street Shoreline
- ③ Save the Sound Project
- ④ Seawalls in Morris Cove

Future Priority Projects

- ① Brewery Square
- ② Dean Street (Final Phase)
- ③ Hemingway and Eastern Streets
- ④ Middletown Avenue
- ⑤ Pond Lily Dam
- ⑥ Seawalls in Morris Cove
- ⑦ Stiles Street and Port of New Haven

Map Document Information

Map Prepared by: Susmitha Attota,
New Haven City Plan
Date: August 2010

Data Source: City of New Haven GIS

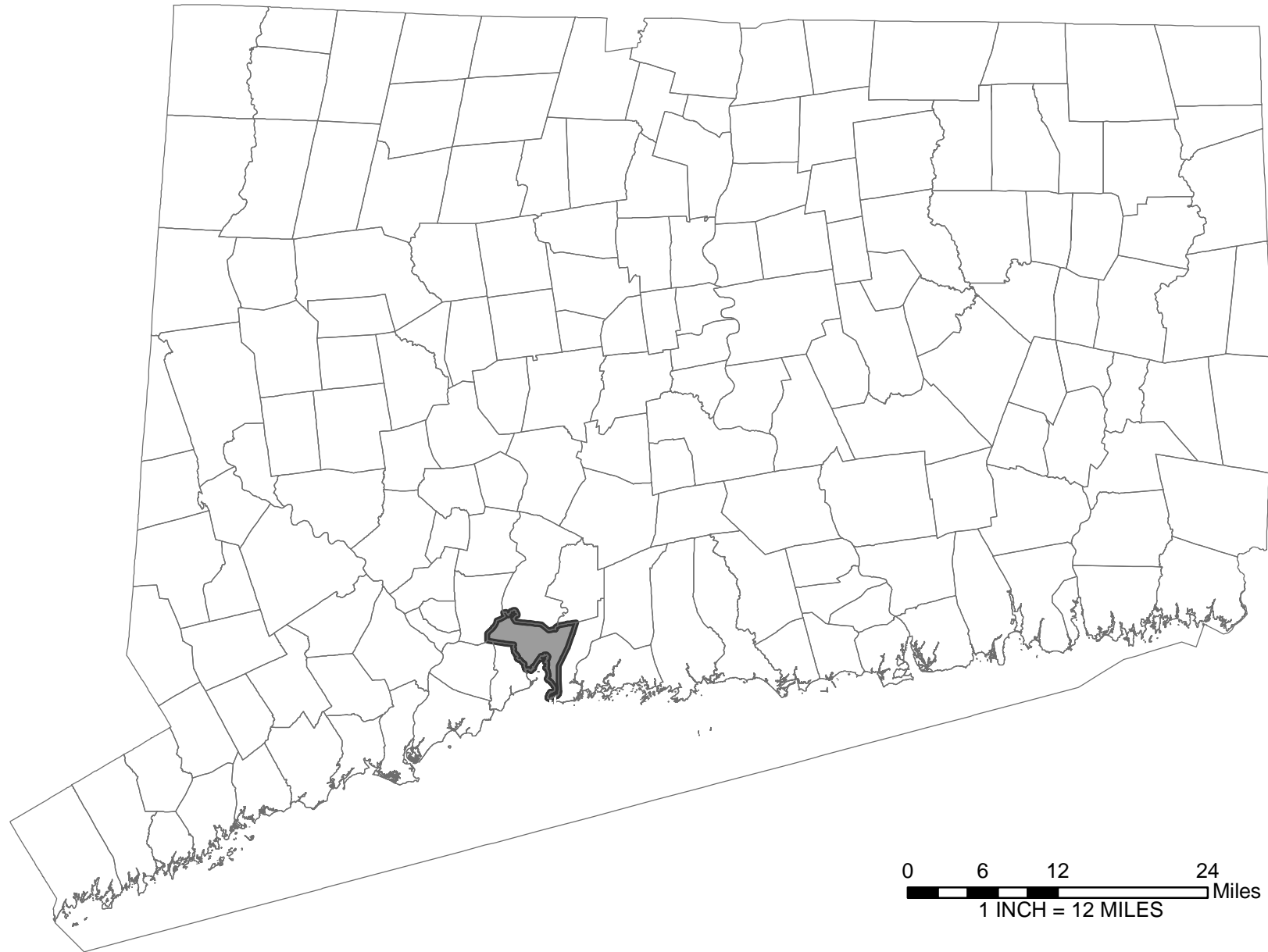
Attention Disclaimer

This map is intended for illustrative and Community-Based Planning processes. Every reasonable effort has been made to assure the accuracy of the map and data provided; nevertheless, some information may not be accurate. The City of New Haven assumes no responsibility arising from the use of this information.

No warranty is made by the City of New Haven as to the accuracy, reliability or completeness of these data for individual or aggregate use with other data. Original data compiled from various sources. Spatial information may not meet national map accuracy standards. This information may be updated without notification.



0 2,800 5,600 11,200
Feet



Map Originally Prepared by
Milone & MacBroom;

Template Modified by
New Haven City Plan Department

Location Map

MMI#: 1621-07-1
MXD: Location1.mxd
Source: www.uconn.edu.magic.lib

New Haven HMP Update

Location:
New Haven, Connecticut

Date:
June 2005/July 2010

Scale:
1" = 12 miles

Sheet:
Figure 2-1



Map Originally Prepared by
Milone & MacBroom;

Template Modified by
New Haven City Plan Department

City Map

MMI#: 1621-07-01
MXD: H:Location2.mxd
SOURCE: USGS QUAD

New Haven HMP Update

LOCATION:

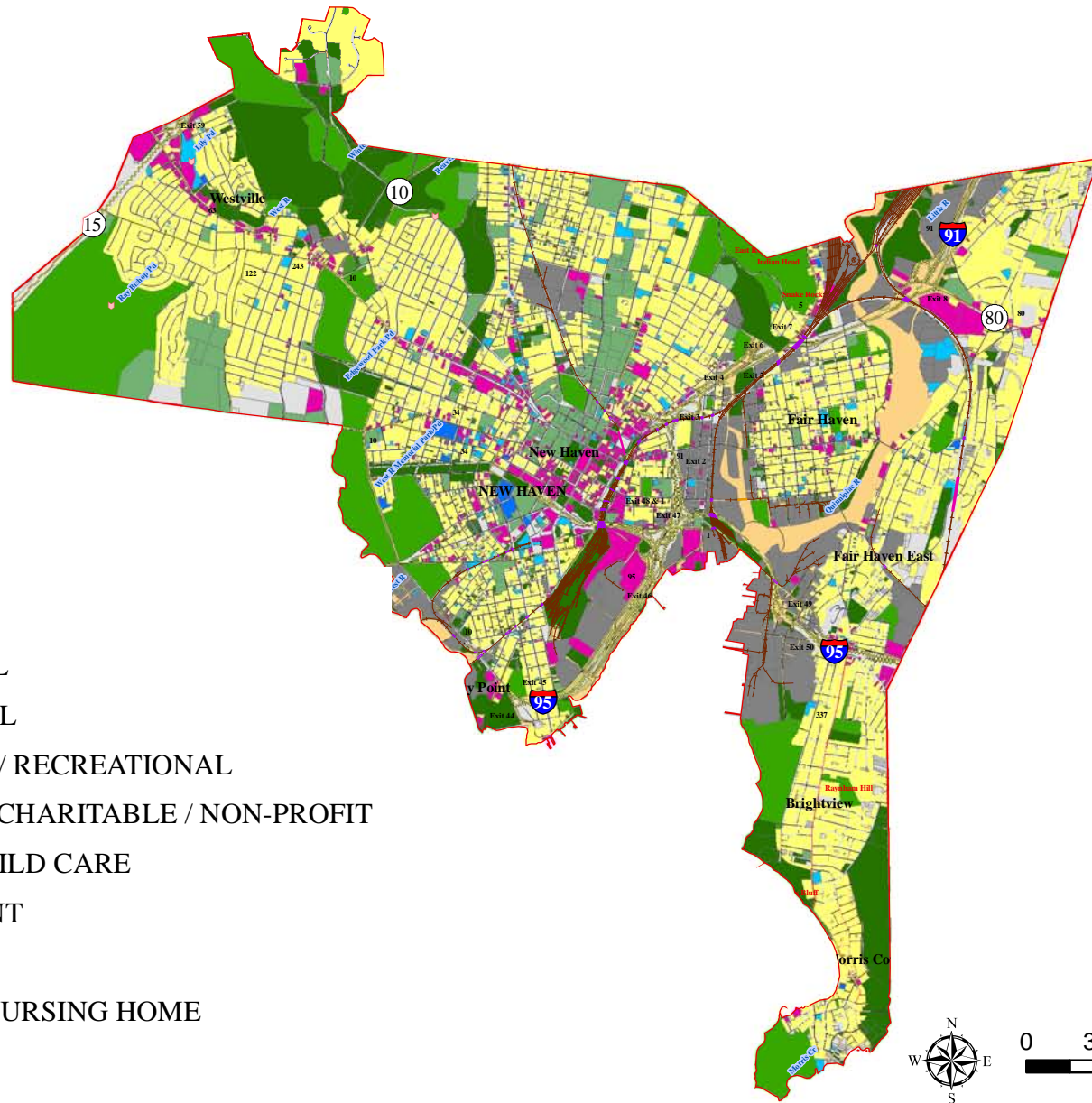
New Haven, CT

DATE:
June 2005/July 2010

SCALE:
1" = 6000'

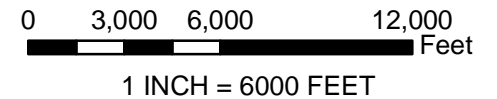
SHEET:

Figure 2-2

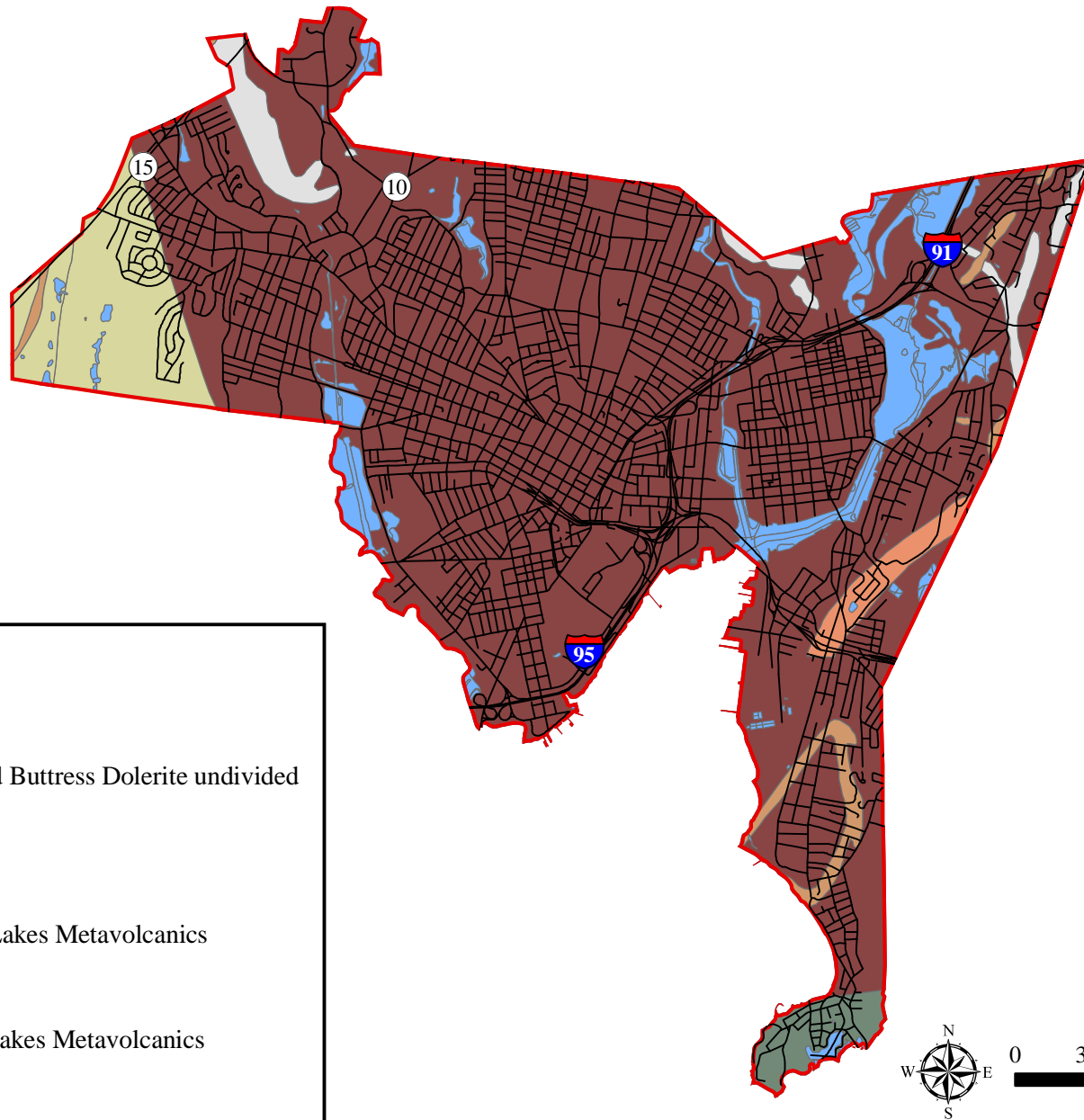


LAND USE

- RESIDENTIAL
- COMMERCIAL
- OPEN SPACE / RECREATIONAL
- RELIGIOUS / CHARITABLE / NON-PROFIT
- SCHOOL / CHILD CARE
- GOVERNMENT
- INDUSTRIAL
- HOSPITAL / NURSING HOME
- VACANT



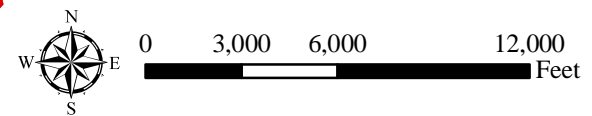
<p>Map Originally Prepared by Milone & MacBroom;</p> <p>Template Modified by New Haven City Plan Department</p>	<p>Existing Land Use Map</p>		<p>Location: New Haven, Connecticut</p>	
	<p>MMI#:1621-07-1 MXD:H:\LandUse.mxd Source: City of New Haven</p>	<p>New Haven HMP Update</p>		<p>Date: June 2005/ July 2010</p> <p>Scale: 1" = 6000'</p>



— Centerline2007



















Bedrock Geology

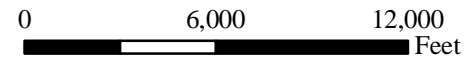
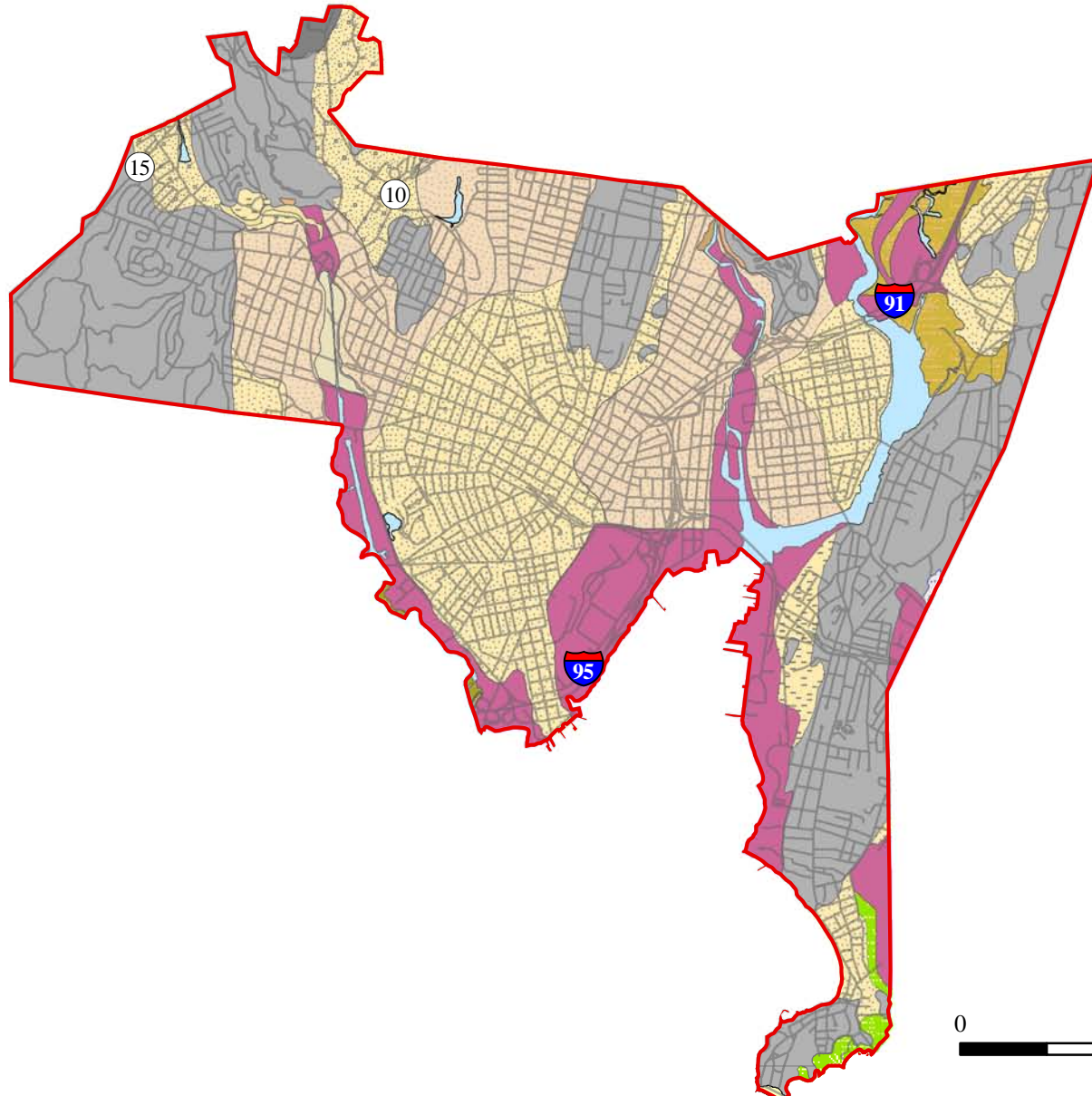
- New Haven Arkose and Buttress Dolerite undivided
- Buttress Dolerite
- Light House Gneiss
- Lower part of Maltby Lakes Metavolcanics
- New Haven Arkose
- Upper part of Maltby Lakes Metavolcanics
- West Rock Dolerite



<p>Map Originally Prepared by Milone & MacBroom;</p> <p>Template Modified by New Haven City Plan Department</p>	<p>Bedrock Geology</p>		<p>Location: New Haven, Connecticut</p>	
	<p>MMI#: 1621-07-1 MXD: H:Bedrock Geology.mxd Source: www.uconn.edu.magic.lib</p>	<p>New Haven HMP Update</p>		<p>Date: June 2005/July 2010</p> <p>Scale: 1" = 6000'</p>
				<p>Sheet: Figure 2-4</p>

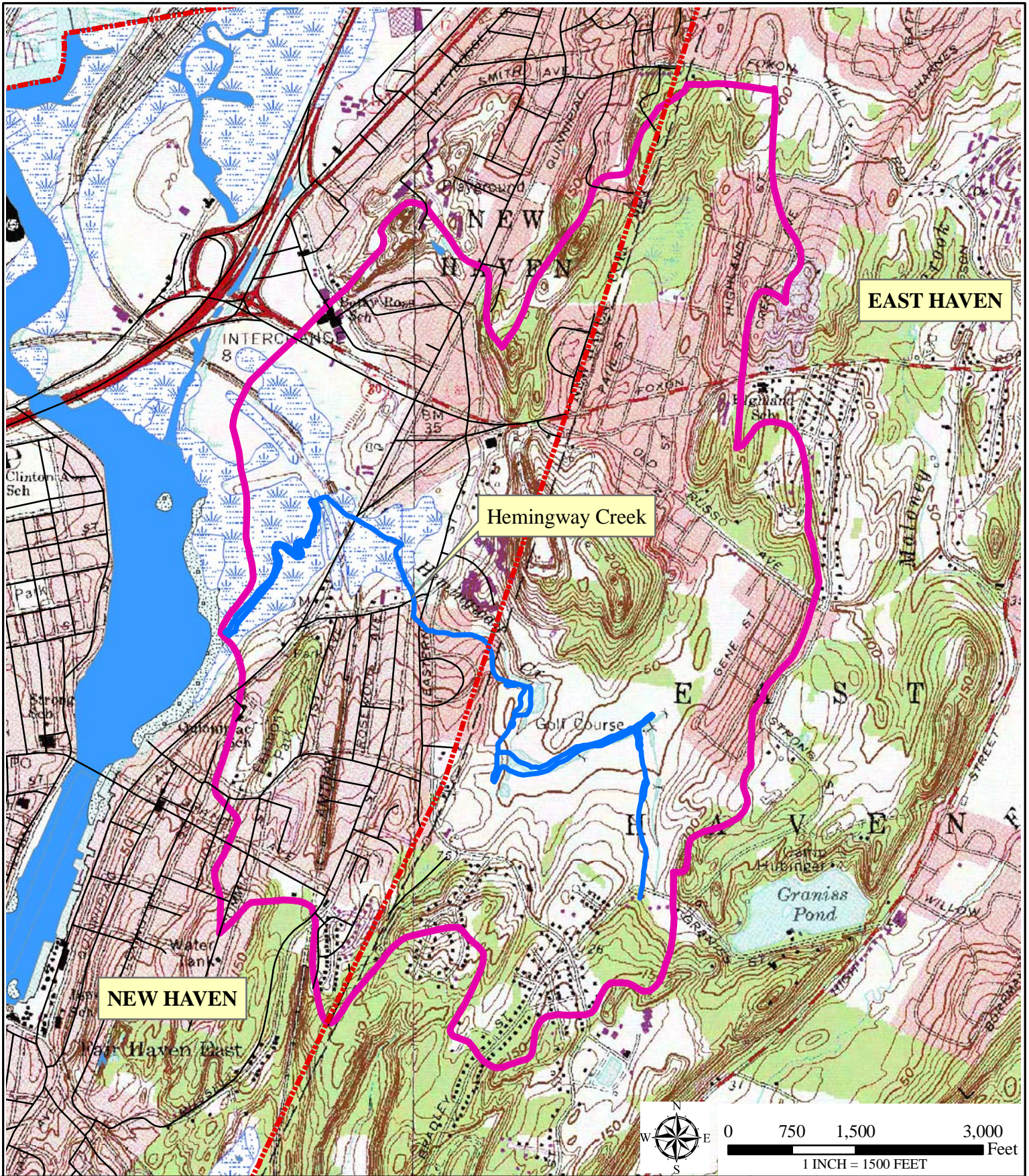
Surficial Materials

-  ALLUV/FINES
-  ALLUV/SAND+GRAVEL
-  ALLUV/SAND/FINES
-  ARTIFICIAL FILL
-  BEACH
-  SALT MARSH
-  SALT MARSH/FINES
-  SALT MARSH/SAND/FINES
-  SAND
-  SAND+GRAVEL/SAND
-  SAND+GRAVEL/SAND/FINES
-  SAND/FINES
-  SWAMP
-  TALUS
-  THICK TILL
-  TILL
-  TILL, SAND+GRAVEL, BOULDERS
-  WATER

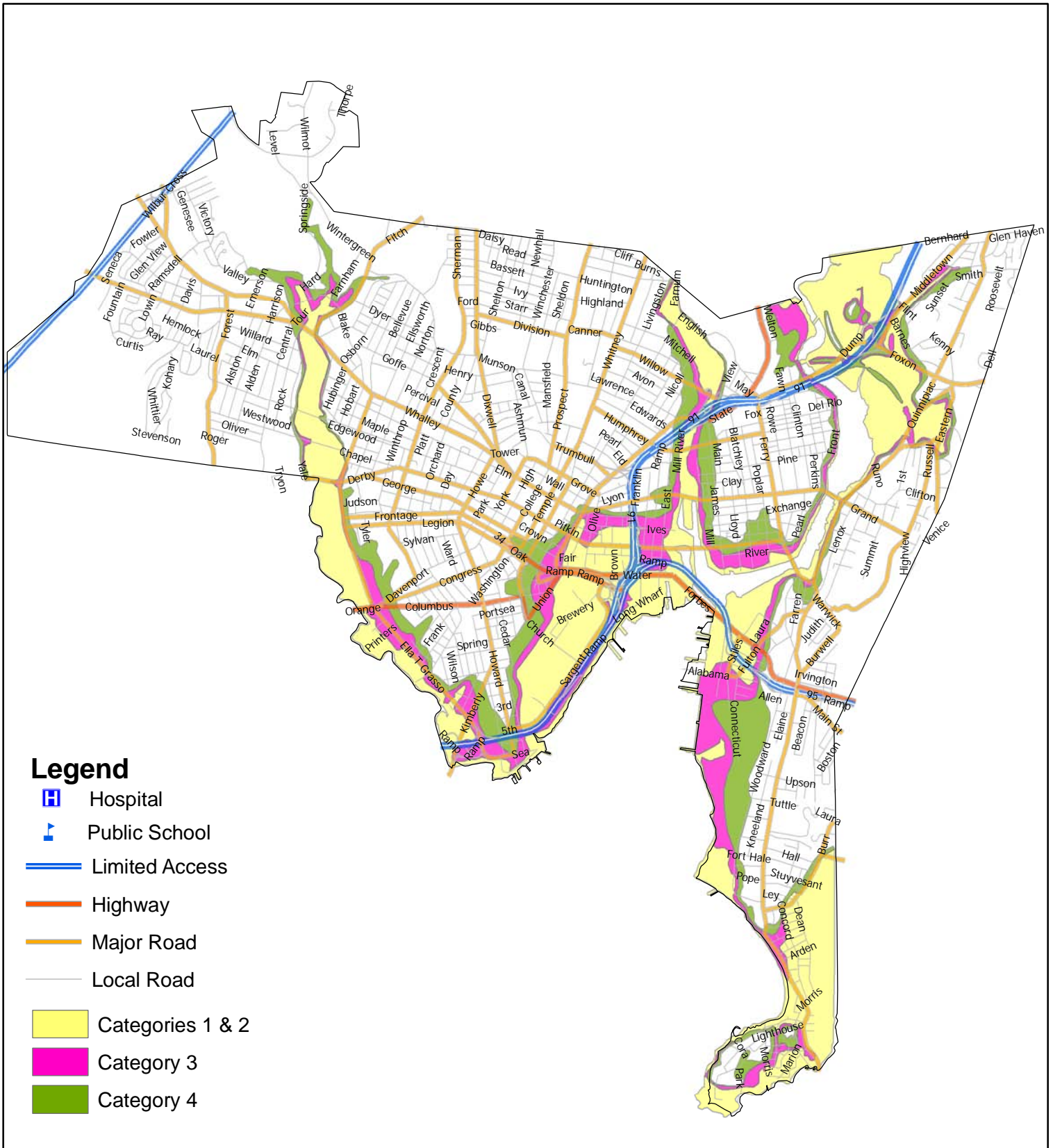


1 INCH = 6000 FEET

Map Originally Prepared by Milone & MacBroom; Template Modified by New Haven City Plan Department	Surficial Materials		Location: New Haven, Connecticut	
	MMI#: 1621-07-1 MXD: Surficial Materials.mxd Source: CONN DOT	New Haven HMP Update		Date: June 2005/July 2010 Scale: 1" = 6000'

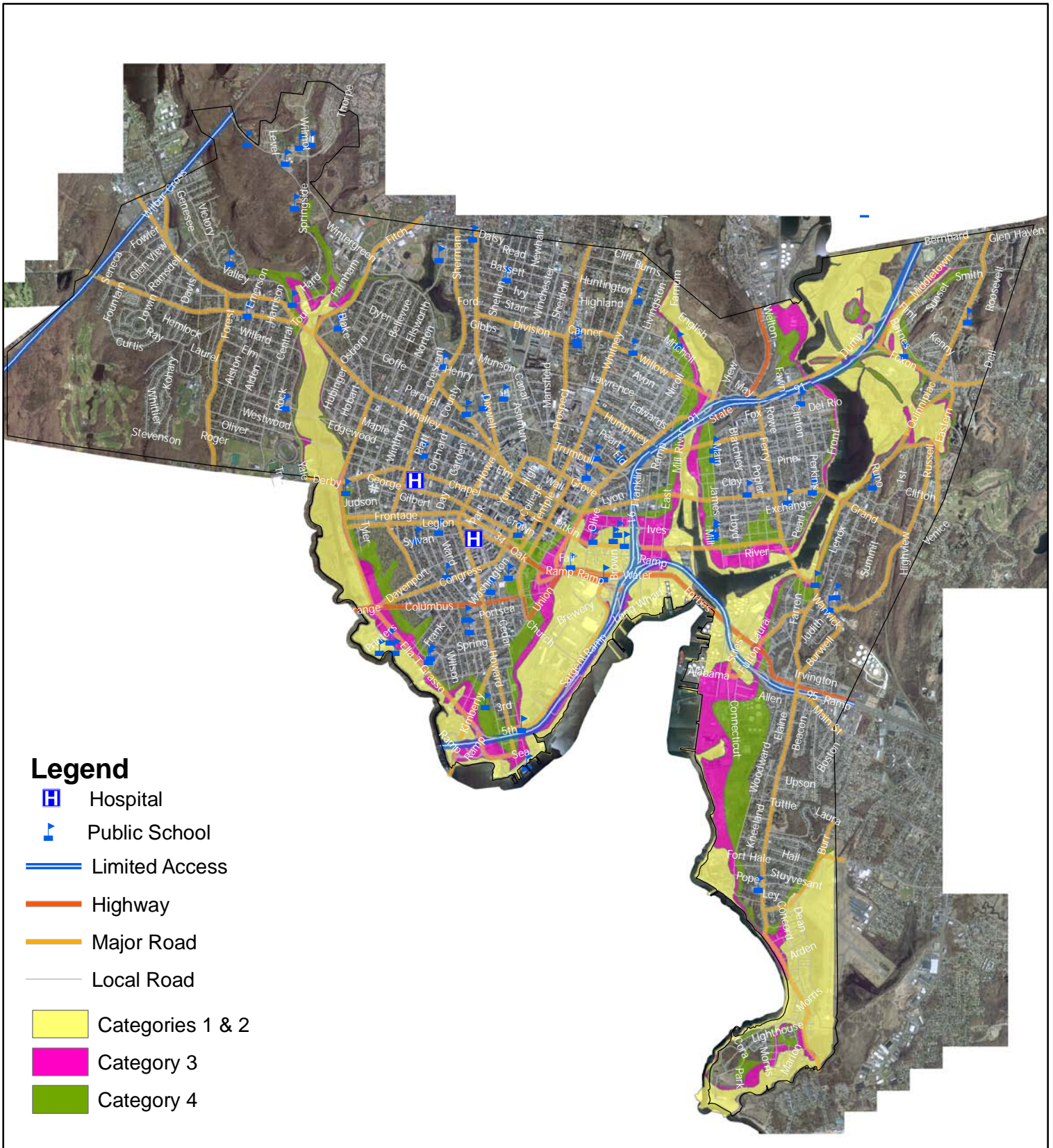


<p>Map Originally Prepared by Milone & MacBroom;</p>	<p>Hemingway Creek Watershed</p>		<p>LOCATION: New Haven, Connecticut</p>	
<p>Template Modified by New Haven City Plan Department</p>	<p>MMI#: 1621-07-1 MXD: H:Hemingway.mxd SOURCE: USGS Quad / DEP</p>	<p>New Haven HMP Update</p>		<p>DATE: June 2005/ July 2010 SCALE: 1" = 1500' SHEET: Figure 3-2</p>



Source: City of New Haven GIS Layers:GIS Data from Milone & Macbroom, 2010

<p>0 1,150 300 4,600 6,900 9,200 Feet</p> <p>Map Prepared By: Susmitha Attota, New Haven City Plan Dept. Date: 08/24/2011</p>	<p align="center">FIGURE 5-1 HURRICANE STORM SURGE AREAS</p> <p align="center">City of New Haven, Connecticut John DeStefano Jr., Mayor</p>	<p align="center">ATTENTION: DISCLAIMER</p> <p>This map is intended for illustrative and Community-Based Planning purposes. Every reasonable effort has been made to assure the accuracy of the map and data provided; nevertheless, some information may not be accurate. The City of New Haven assumes no responsibility arising from the use of this information.</p> <p>No warranty is made by the City of New Haven as to the accuracy, reliability or completeness of these data for individual or aggregate use with other data. Original data compiled from various sources. Spatial information may not meet national map accuracy standards. This information may be updated without notification.</p>
---	--	---



Source: City of New Haven GIS Layers:GIS Data from Milone & Macbroom, 2010

0 1,150 300 4,600 6,900 9,200
 Feet

Map Prepared By: Susmitha Attota,
New Haven City Plan Dept.
Date: 08/24/2011

FIGURE 5-2
HURRICANE STORM
SURGE AREAS

City of New Haven, Connecticut
 John DeStefano Jr., Mayor

ATTENTION: DISCLAIMER

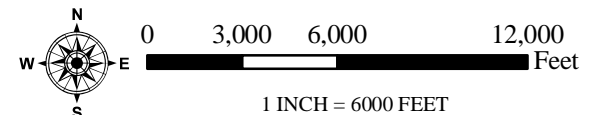
This map is intended for illustrative and Community-Based Planning processes. Every reasonable effort has been made to assure the accuracy of the map and data provided; nevertheless, some information may not be accurate. The City of New Haven assumes no responsibility arising from the use of this information.

No warranty is made by the City of New Haven as to the accuracy, reliability or completeness of these data for individual or aggregate use with other data. Original data compiled from various sources. Spatial information may not meet national map accuracy standards. This information may be updated without notification.



Top Priority Mitigation Actions

- 1. Brewery Square
- 2. Seawalls in Morris Cove
- 3. Pond Lily Dam
- 4. Dean Street (Final Phase)
- 5. Hemingway and Eastern Streets
- 6. Stiles Street and Port of New Haven
- 7. Middletown Avenue









<p>Map Originally Prepared by Milone & MacBroom;</p> <p>Template Modified by New Haven City Plan Department</p>	<p>Priority Recommendations Map</p>		<p>Location: New Haven, Connecticut</p>	
	<p>MXD:H:PriorityMap.mxd</p> <p>Source: USGS Orthophotos</p>	<p>New Haven HMP Update</p>		<p>Date: June 2005/ July 2010</p> <p>Scale: 1" = 6000'</p>

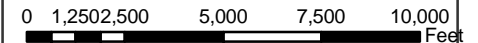
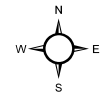


Figure 11-2
Shoreline Properties Below
11 Feet Flood Elevation



Legend

-  Parcels Below 11 Feet Flood Elevation
-  Parcels
-  Limited Access
-  Highway
-  Major Road
-  Local Road



Map Document Information

Map Prepared by: Susmitha Attota,
New Haven City Plan
Date: July 2010

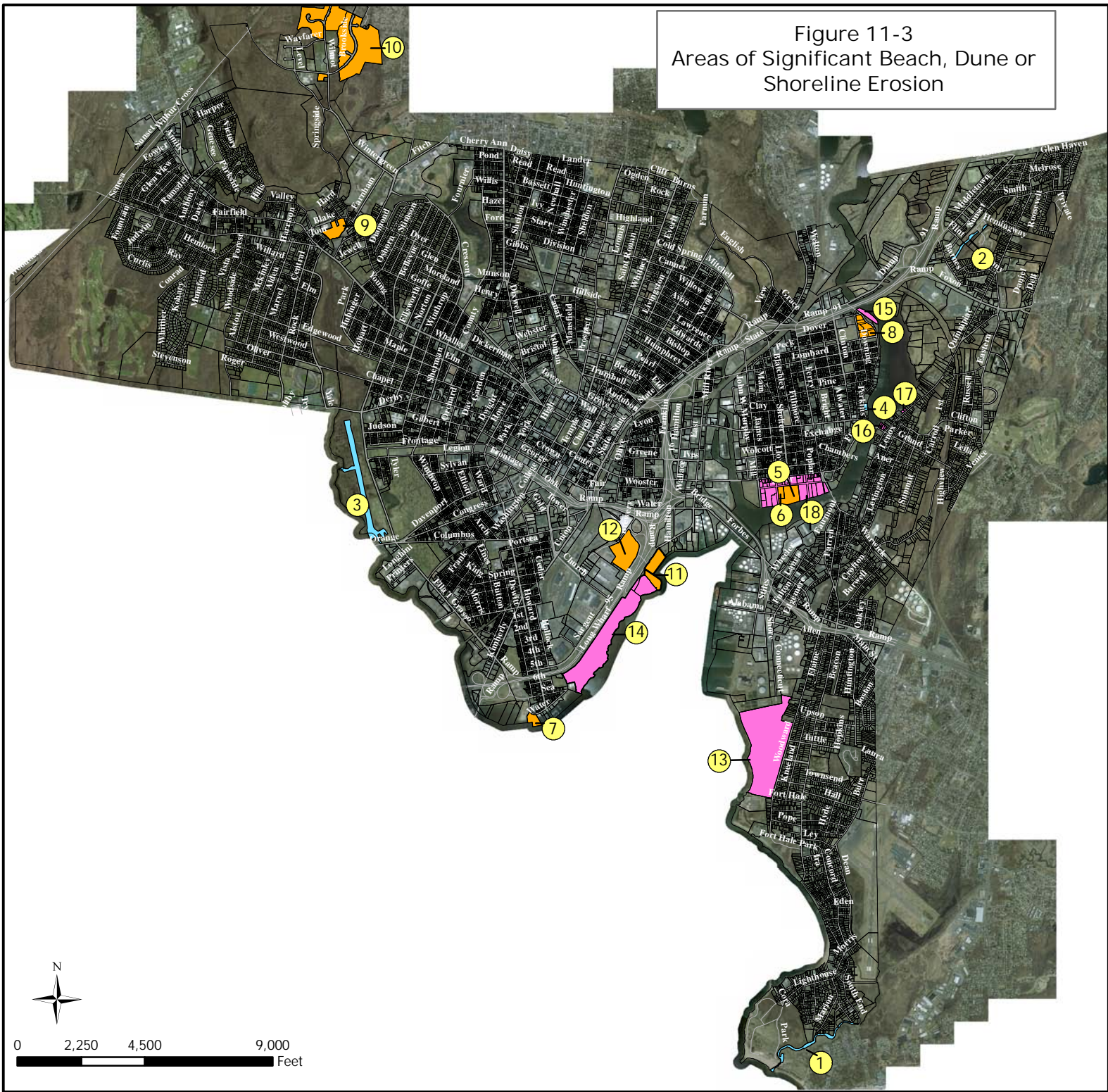
Data Source: City of New Haven GIS; July 2010

ATTENTION: DISCLAIMER

This map is intended for illustrative and Community-Based Planning processes. Every reasonable effort has been made to assure the accuracy of the map and data provided; nevertheless, some information may not be accurate. The City of New Haven assumes no responsibility arising from the use of this information. No warranty is made by the City of New Haven as to the accuracy, reliability or completeness of these data for individual or aggregate use with other data. Original data compiled from various sources. Spatial information may not meet national map accuracy standards. This information may be updated without notification.



Figure 11-3
Areas of Significant Beach, Dune or
Shoreline Erosion



Legend

- Coastal Areas Modified**
- Morris Creek Tide Gates 1
 - Hemingway Creek (Future) 2
 - West River Tide Gate Area (Future) 3
 - 195 Front St. Mixed Use Development 4
- Recent Residential Development/ Identified Future Development/ Areas of Re-Zoning**
- Colony Hardware/100 River St (Commercial/Industrial) 5
 - 142 River St (Commercial/Industrial) 6
 - Harbor Pointe, 2 Ella Grasso Blvd. (Residential) 7
 - Quinnipiac Terrace, Front St. (Residential) 8
 - Wintergreen Apartments, 440 Blake St. (Residential) 9
 - West Rock-Brookside, 50 Brookside Ave. (Residential) 10
 - Boathouse at Canal Dock (Marine Commercial) 11
 - IKEA, 500 Sargent Dr. (Commercial) 12
- Areas of Significant Beach, Dune Or Shoreline Erosion**
- East Shore Park 13
 - Long Wharf Park 14
 - Dover Beach 15
 - Dragon Point (750 Quinnipiac Ave) (Residential) 16
 - 764-776 Quinnipiac Ave (Residential) 17
 - River Street MDP Parcels (Commercial/Industrial) 18

Map Document Information
Map Prepared by: Susmitha Attota,
New Haven City Plan
Date: March 2010

Data Source: City of New Haven GIS

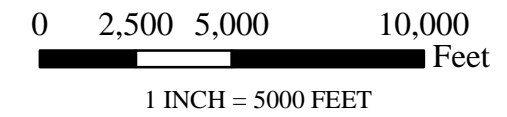
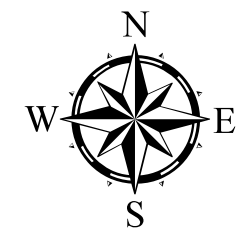
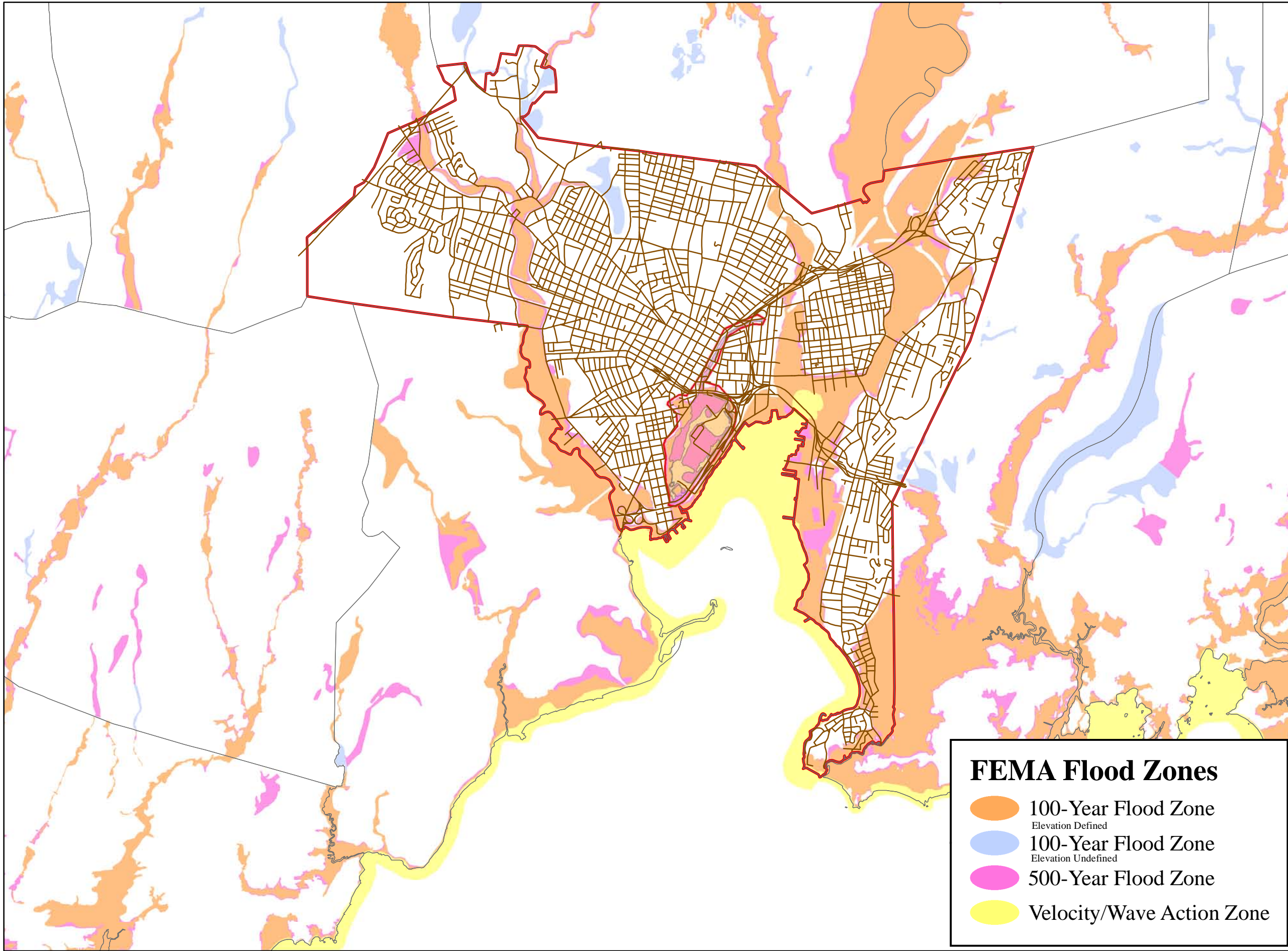
Attention Disclaimer

This map is intended for illustrative and Community-Based Planning processes. Every reasonable effort has been made to assure the accuracy of the map and data provided; nevertheless, some information may not be accurate. The City of New Haven assumes no responsibility arising from the use of this information.

No warranty is made by the City of New Haven as to the accuracy, reliability or completeness of these data for individual or aggregate use with other data. Original data compiled from various sources. Spatial information may not meet national map accuracy standards. This information may be updated without notification.



0 2,250 4,500 9,000 Feet



NOTE: DIGITIZED FROM FEDERAL EMERGENCY MANAGEMENT AGENCY FLOOD INSURANCE RATE MAPS LAST UPDATED OCTOBER 1997





FEMA FLOOD ZONES

**New Haven HMP
New Haven, Connecticut**

Date: June 2005/
July 2010

Sheet:
Figure 3-1

Scale: 1' = 5000'

- FEMA Flood Zones**
-  100-Year Flood Zone
Elevation Defined
 -  100-Year Flood Zone
Elevation Undefined
 -  500-Year Flood Zone
 -  Velocity/Wave Action Zone

Map Originally Prepared by
Milone & MacBroom;

Template Modified by
New Haven City Plan Department