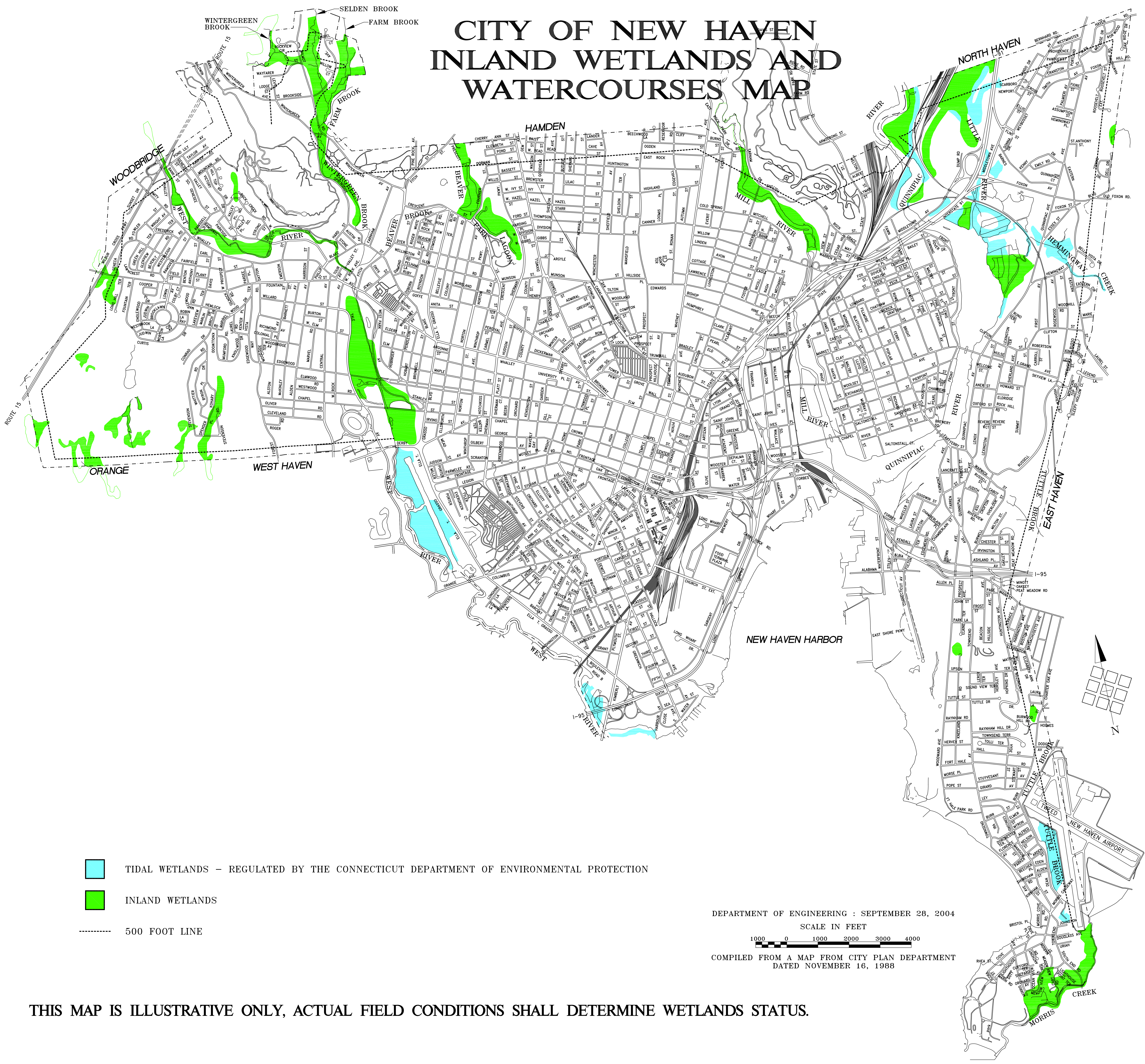
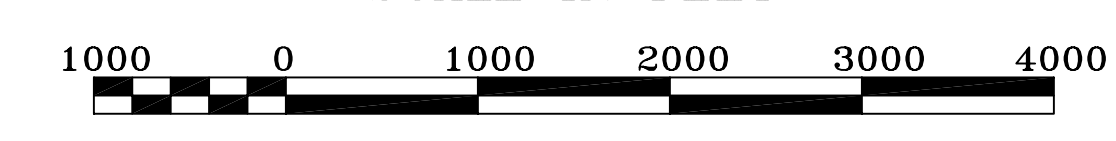


# CITY OF NEW HAVEN INLAND WETLANDS AND WATERCOURSES MAP



- TIDAL WETLANDS – REGULATED BY THE CONNECTICUT DEPARTMENT OF ENVIRONMENTAL PROTECTION
- INLAND WETLANDS
- 500 FOOT LINE

DEPARTMENT OF ENGINEERING : SEPTEMBER 28, 2004  
SCALE IN FEET



COMPILED FROM A MAP FROM CITY PLAN DEPARTMENT  
DATED NOVEMBER 16, 1988

THIS MAP IS ILLUSTRATIVE ONLY, ACTUAL FIELD CONDITIONS SHALL DETERMINE WETLANDS STATUS.