

PLAN VIEW

2- #4 BARS, 3' LONG, 3" APART
ALSO WOVEN WIRE FABRIC
4 x 4, #4 GAUGE

STANDARD CATCH BASIN
FRAME AND GRATE

CATCH BASIN FRAME & GRATE
TO BE SET IN CEMENT MORTAR
AND BUILT UP WITH BRICK
TO MEET GRADE.

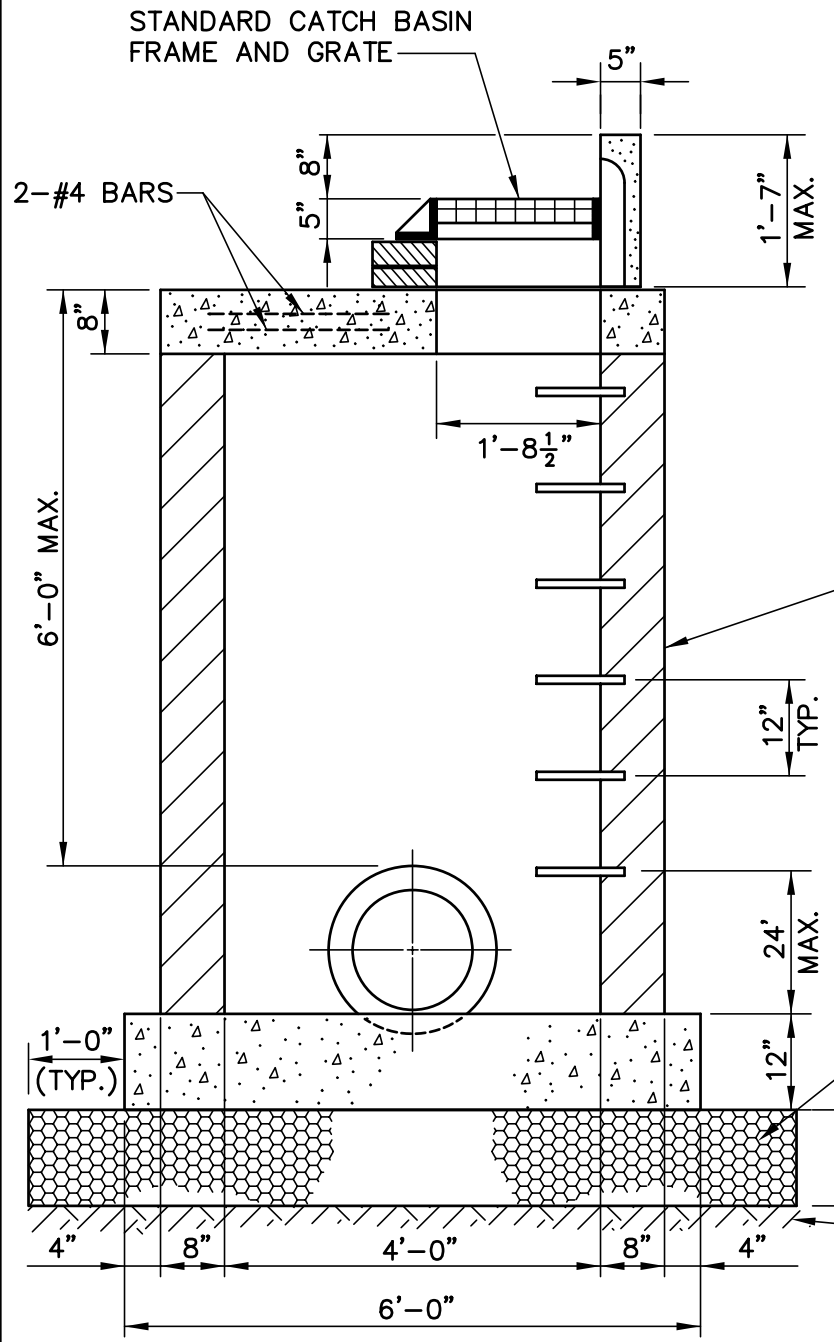
GRANITE CURB INLET
AS PER "STANDARD
CATCH BASIN DETAILS"

PRECAST BRICK OR CONCRETE
BLOCK. BRICK WALLS TO BE
PLASTERED WITH CEMENT
MORTAR AS PER SPECIFICATIONS

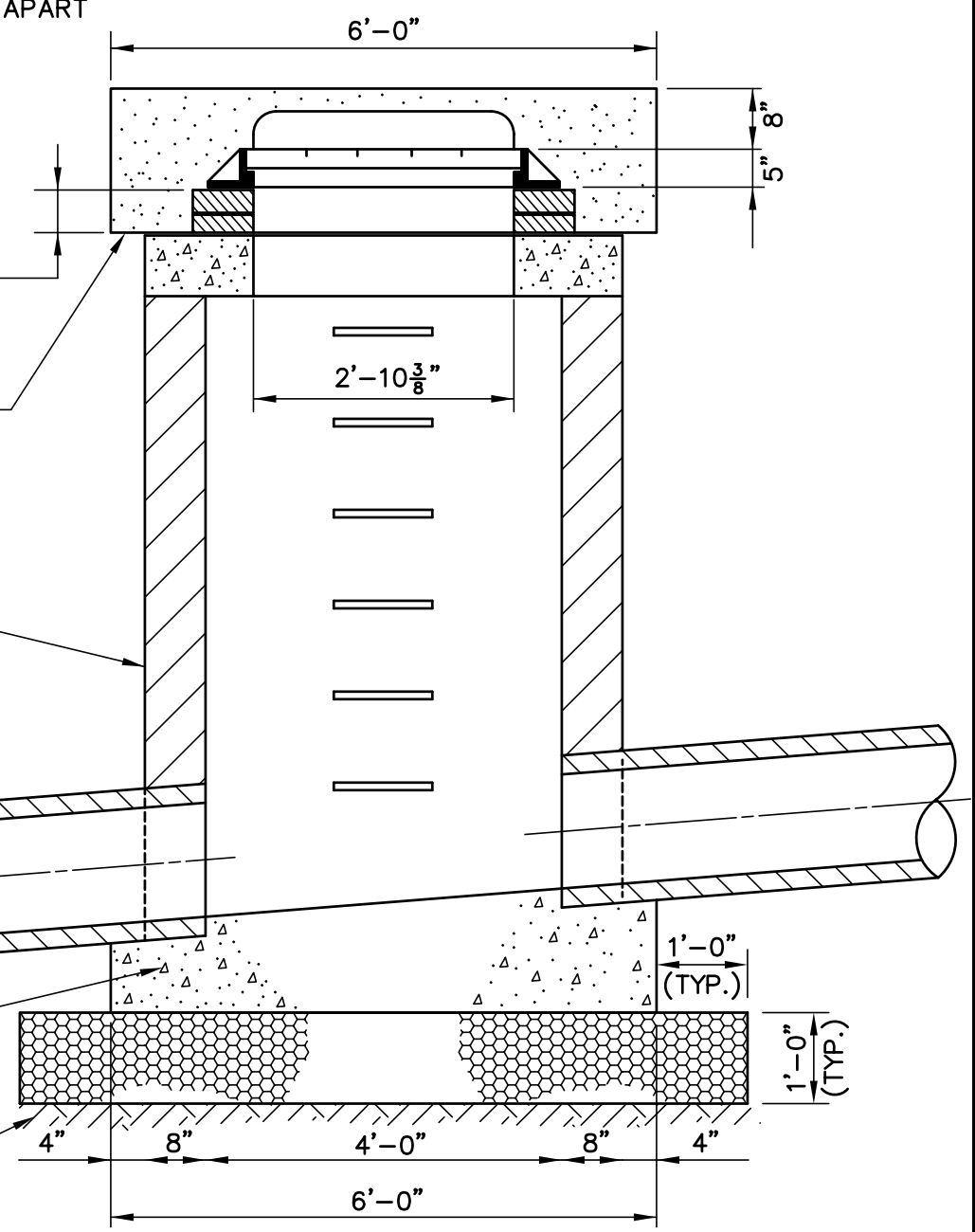
PROCESSED COARSE
AGGREGATE

CLASS B (AE) CONCRETE
PRECAST OR POURED IN PLACE

STABILIZED UNDISTURBED
EARTH



SECTION C-C



SECTION D-D

SHALLOW CATCH BASIN MANHOLE

SCALE: 1/2" = 1'-0"