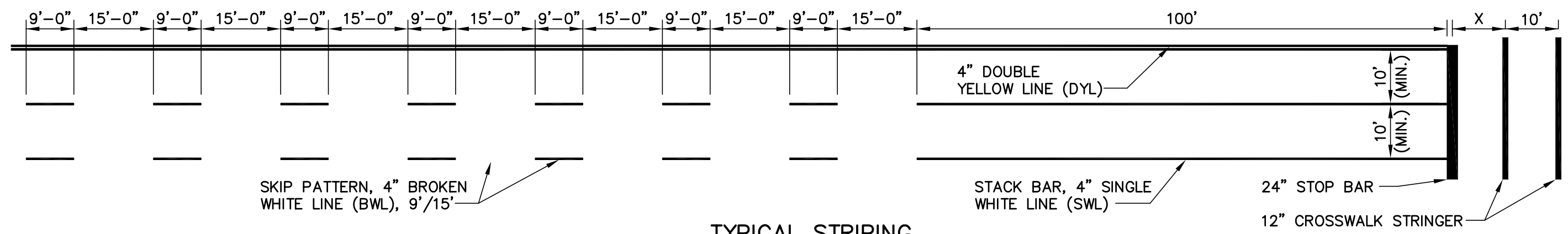
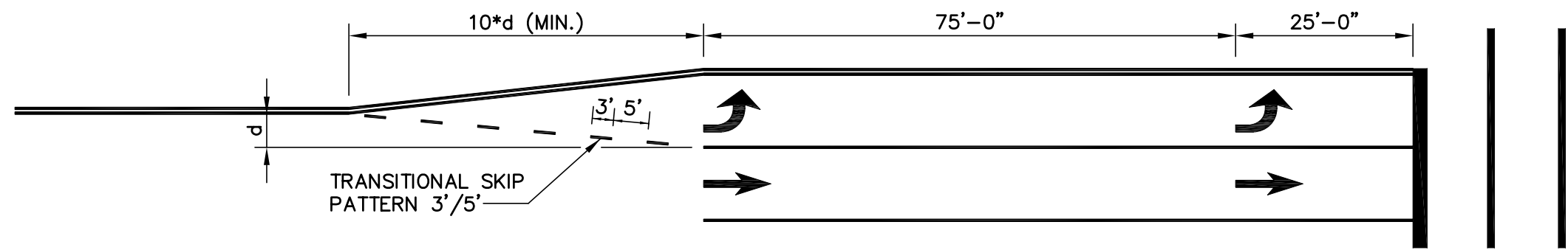


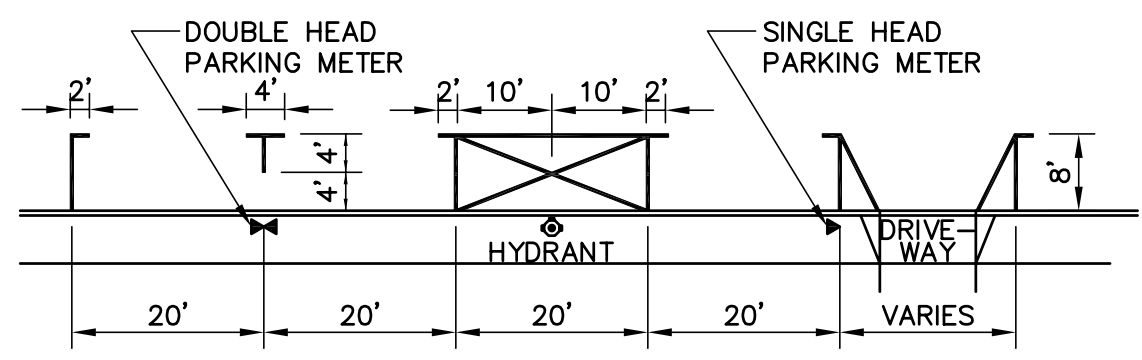
⊙ SIGNAL, X = 10 FT. (MIN.)
⊙ STOP SIGN, X = 4 FT.



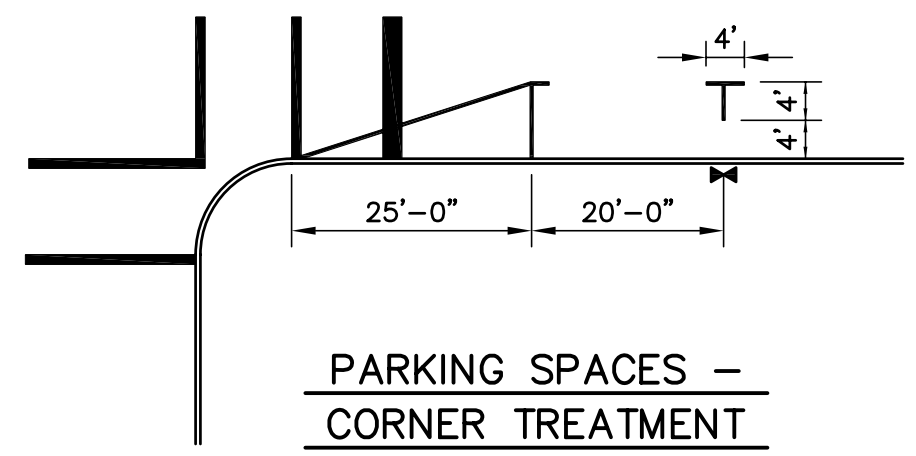
TYPICAL STRIPING



TRANSITIONAL STRIPING



ON STREET PARKING SPACES



PARKING SPACES - CORNER TREATMENT

PAVEMENT MARKING LEGEND

STRINGER - 12" WHITE

STOP BARS - 24" WHITE

STACK BARS - 100' x 4" (WL) (UNLESS OTHERWISE NOTED)

4" BWL (BROKEN WHITE LINE SKIP PATTERNS)

9'W, 15' SKIP

CAT TRACKS (A) - 2'W, 4' SKIP

CAT TRACKS (B) - 3'W, 5' SKIP

CENTERLINE (⊘) - 4"YELLOW x 4"YELLOW

EDGE LINE - 4"YELLOW OR 4" WHITE

PARKING STALLS

AT DRIVEWAY OR CROSSWALK

- NOTES:**
- LAYOUT OF PAVEMENT MARKINGS MUST BE APPROVED BY THE DEPARTMENT OF TRAFFIC AND PARKING PRIOR TO APPLICATION OF PERMANENT MARKINGS.
 - ALL LONG LINE PAVEMENT MARKING SHALL BE 15 MIL EPOXY RESIN.
 - ALL INTERSECTION TYPE PAVEMENT MARKINGS SHALL BE 90 MIL THERMOPLASTIC. THIS INCLUDES STOP BARS, ARROWS AND LEGENDS.

TYPICAL PAVEMENT MARKING DETAILS

SCALE: 1"=20'-0"