

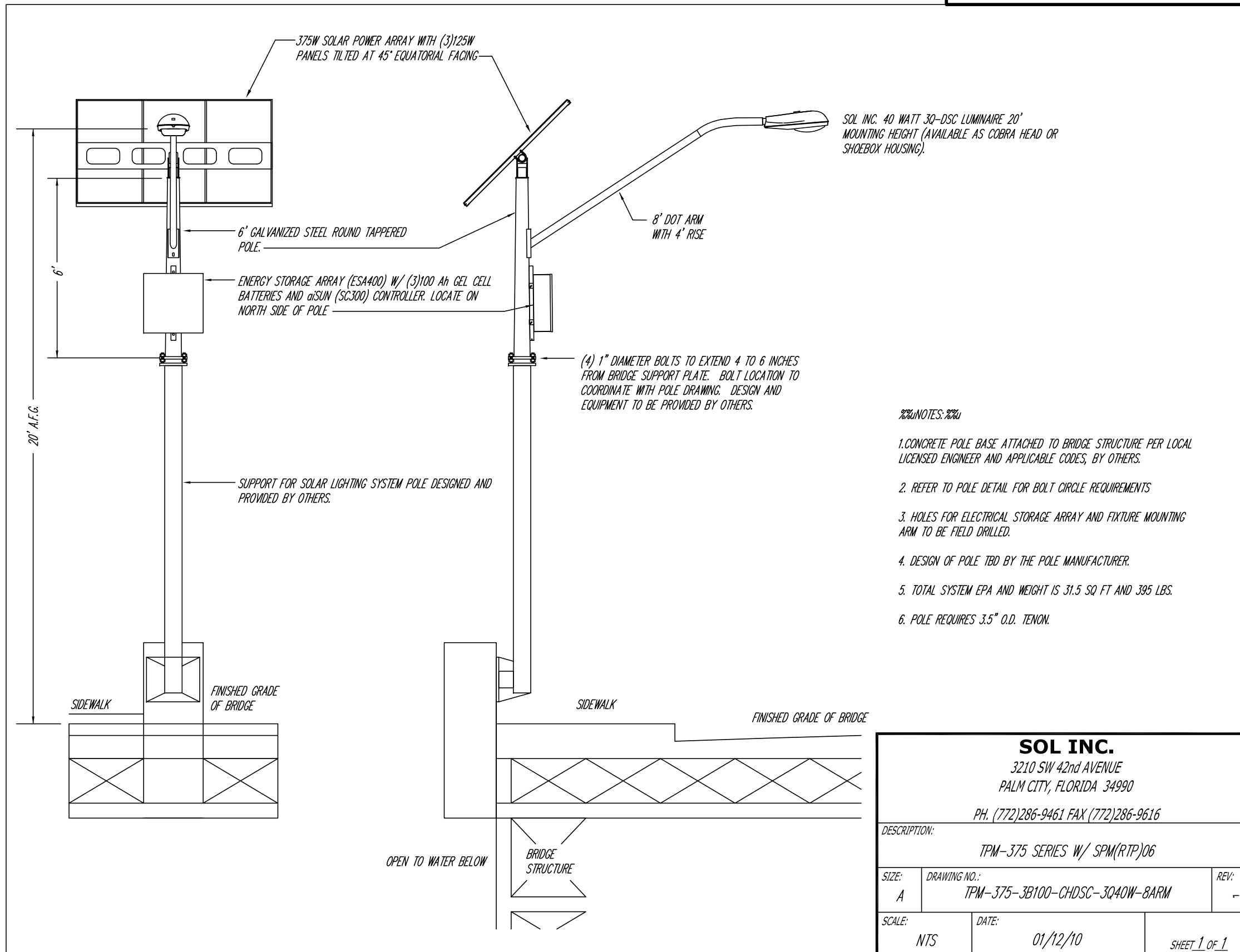
Notes:

Plans and Drawings are products as noted, and as recommended by the manufacturer. These Drawings may not represent the latest updates as provided by the manufacturer, so it is up to the contractors or vendors to submit shop drawings to the City Engineering Department for approval to insure conformance with these specifications.

**CITY OF NEW HAVEN
DEPARTMENT OF ENGINEERING**

RICHARD H. MILLER, P.E., L.S. 9886
CITY ENGINEER

DRIVE:
K:\ENGINEER\DWG\CITYSTD\
FILE:
DETAILS\LIGHTING STANDARDS\2011 DETAILS
DATE:
JULY 1, 2011
DRAWING NO.:
LD-NH-26



NOTES:

1. CONCRETE POLE BASE ATTACHED TO BRIDGE STRUCTURE PER LOCAL LICENSED ENGINEER AND APPLICABLE CODES, BY OTHERS.
2. REFER TO POLE DETAIL FOR BOLT CIRCLE REQUIREMENTS
3. HOLES FOR ELECTRICAL STORAGE ARRAY AND FIXTURE MOUNTING ARM TO BE FIELD DRILLED.
4. DESIGN OF POLE TBD BY THE POLE MANUFACTURER.
5. TOTAL SYSTEM EPA AND WEIGHT IS 31.5 SQ FT AND 395 LBS.
6. POLE REQUIRES 3.5" O.D. TENON.

| | | |
|---|--|--------------|
| SOL INC. 3210 SW 42nd AVENUE PALM CITY, FLORIDA 34990 PH. (772)286-9461 FAX (772)286-9616 | | |
| DESCRIPTION: TPM-375 SERIES W/ SPM(RTP)06 | | |
| SIZE: A | DRAWING NO.: TPM-375-3B100-CHDSC-3Q40W-8ARM | REV: - |
| SCALE: NTS | DATE: 01/12/10 | SHEET 1 OF 1 |