

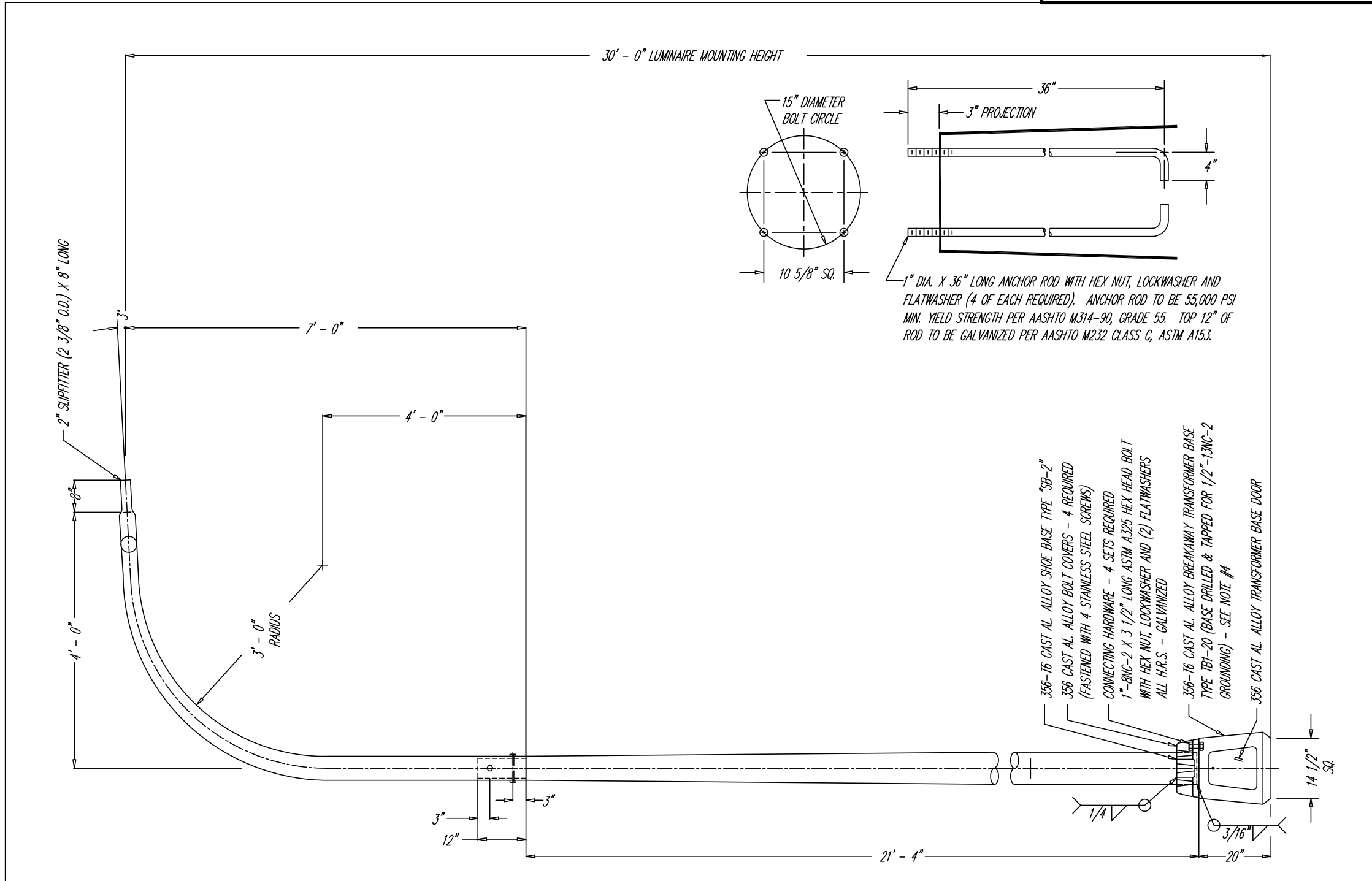
Notes:

Plans and Drawings are products as noted, and as recommended by the manufacturer. These Drawings may not represent the latest updates as provided by the manufacturer, so it is up to the contractors or vendors to submit shop drawings to the City Engineering Department for approval to insure conformance with these specifications.

**CITY OF NEW HAVEN
DEPARTMENT OF ENGINEERING**

RICHARD H. MILLER, P.E., L.S. 9886
CITY ENGINEER

DRIVE:	X:\ENGINEER\DWG\CITYSTD\
FILE:	DETAILS\LIGHTING STANDARDS\2011 DETAILS
DATE:	JULY 1, 2011
DRAWING NO.:	LD-NH-06



NOTE:

1. - USE 4043 WELD WIRE.
2. - 6063-T4 ASSEMBLY .375 WALL OR LESS TO BE HEAT-TREATED TO T6 TEMPER AFTER WELDING.
3. - AFTER INSTALLATION, WARRANTY APPLIES ONLY IF THE ASSEMBLY IS COMPLETE INCLUDING LUMINAIRE(S) AND WIRING.
4. - TRANSFORMER BASE IS A FHWA APPROVED BREAKAWAY DEVICE MEETING THE REQUIREMENTS OF THE 1975 AASHTO SPECIFICATIONS.

REVISIONS				
ALT.	DESCRIPTION	DATE	BY	CHK.

MATERIAL	
STOCK SIZE	
FINISH OR TEMPER	
CUSTOMER	NEW HAVEN, CT.

95 GNARLED HOLLOW RD.
EAST SETAUKET, N.Y.
11733

flagpoles, inc.

TUBULAR PRODUCTS, INC.

TITLE
RTB8M30IAD14

DR. W.W.W.	DATE 11-23-09	DWG. NO.
CHK. S.A.F.	DATE 11-23-09	10072
APP.		
SCALE	NONE	

**CONTINUOUS ALUMINUM POLE ON TRANSFORMER BASE
WITH 4'-0" ARM
NOT TO SCALE
ALUMINUM POLE AND ARM
AS NOTED**