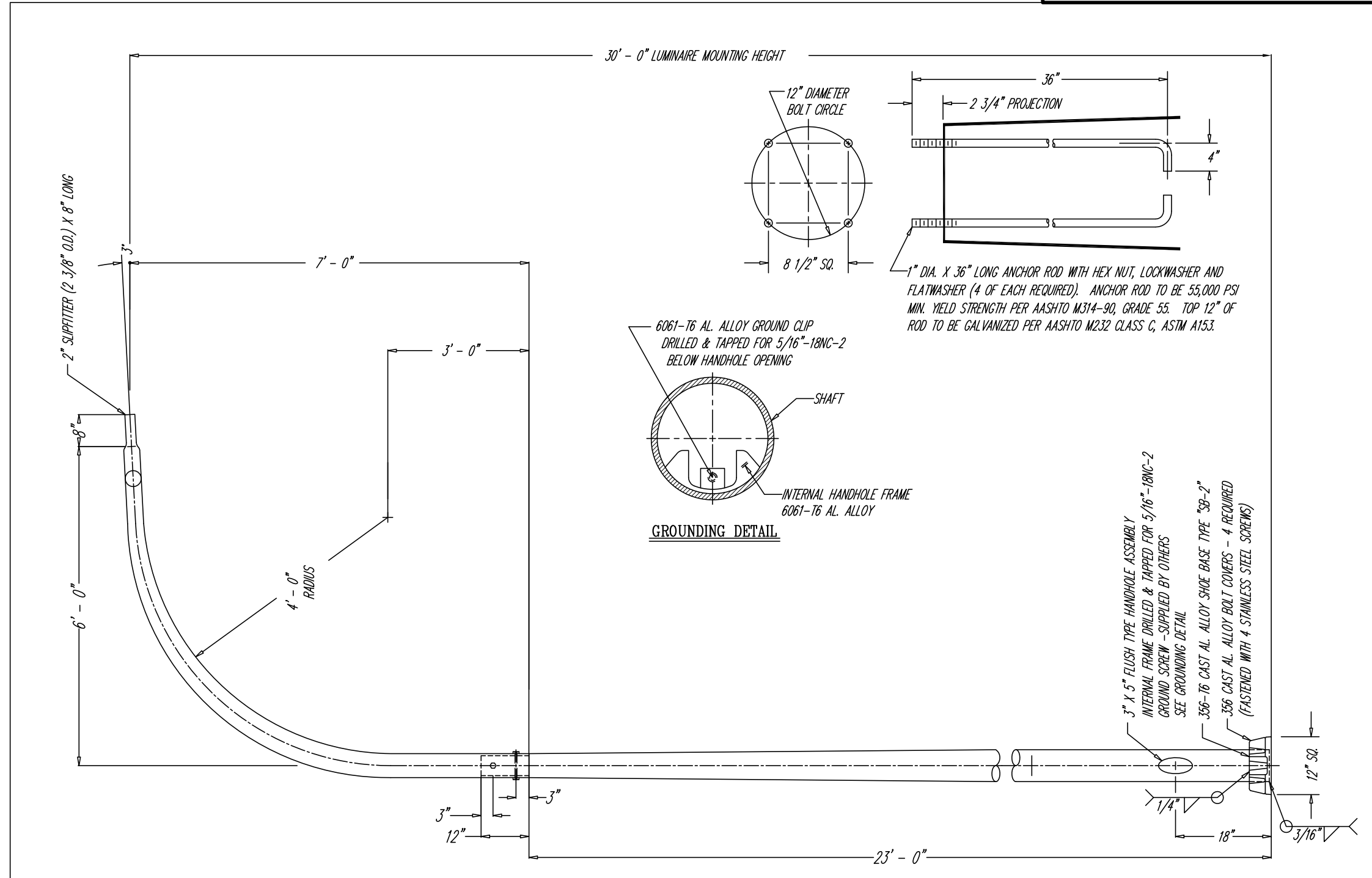


Notes:

Plans and Drawings are products as noted, and as recommended by the manufacturer. These Drawings may not represent the latest updates as provided by the manufacturer, so it is up to the contractors or vendors to submit shop drawings to the City Engineering Department for approval to insure conformance with these specifications.



CONTINUOUS ALUMINUM POLE ON FLAT BASE
WITH INTEGRAL 6'-0" ARM

NOT TO SCALE

ALUMINUM POLE AND ARM

AS NOTED

NOTE:

1. - USE 4043 WELD WIRE.
2. - 6063-T4 ASSEMBLY .375 WALL OR LESS TO BE HEAT-TREATED TO T6 TEMPER AFTER WELDING.
3. - AFTER INSTALLATION, WARRANTY APPLIES ONLY IF THE ASSEMBLY IS COMPLETE INCLUDING LUMINAIRE(S) AND WIRING.

REVISIONS				
ALT.	DESCRIPTION	DATE	BY	CHK.

MATERIAL	
STOCK SIZE	
FINISH OR TEMPER	
CUSTOMER	NEW HAVEN, CT.

flagpoles, inc.
95 GNARLED HOLLOW RD.
EAST SETAUKET, N.Y.
11733
TUBULAR PRODUCTS, INC.

TITLE
RTA8M30AAD16

DR. W.W.W.	DATE 11-23-09	DWG. NO.
CHK. S.A.F.	DATE 11-23-09	10073
APP.		
SCALE	NONE	