

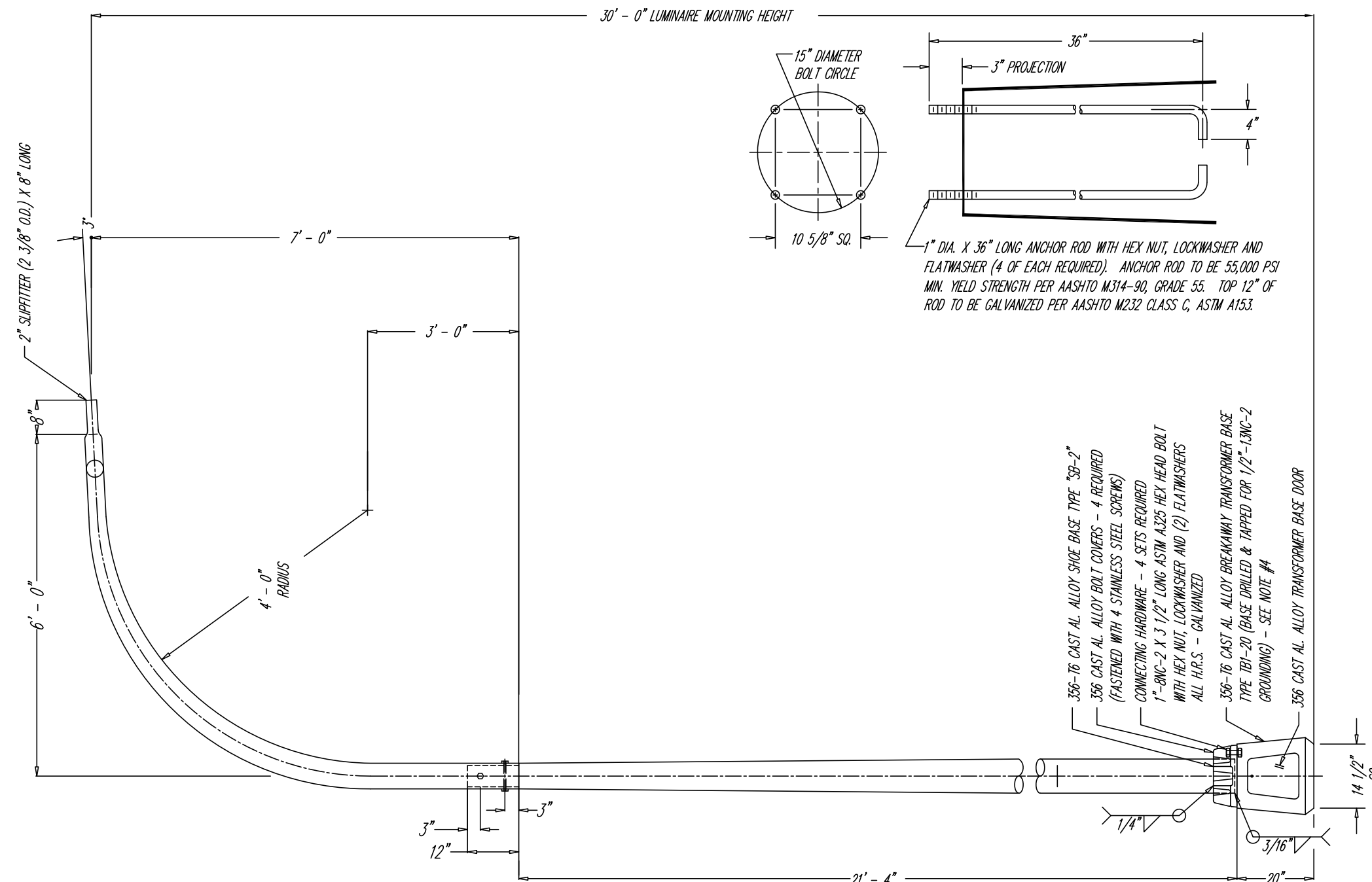
Notes:

Plans and Drawings are products as noted, and as recommended by the manufacturer. These Drawings may not represent the latest updates as provided by the manufacturer, so it is up to the contractors or vendors to submit shop drawings to the City Engineering Department for approval to insure conformance with these specifications.

**CITY OF NEW HAVEN
DEPARTMENT OF ENGINEERING**

RICHARD H. MILLER, P.E., L.S. 9886
CITY ENGINEER

| | |
|--------------|---|
| DRIVE: | K:\ENGINEER\DWG\CITYSTD\ |
| FILE: | DETAILS\LIGHTING STANDARDS\2011 DETAILS |
| DATE: | JULY 1, 2011 |
| DRAWING NO.: | LD-NH-08 |



NOTE:

1. - USE 4043 WELD WIRE.
2. - 6063-T4 ASSEMBLY .375 WALL OR LESS TO BE HEAT-TREATED TO T6 TEMPER AFTER WELDING.
3. - AFTER INSTALLATION, WARRANTY APPLIES ONLY IF THE ASSEMBLY IS COMPLETE INCLUDING LUMINAIRE(S) AND WIRING.
4. - TRANSFORMER BASE IS A FHWA APPROVED BREAKAWAY DEVICE MEETING THE REQUIREMENTS OF THE 1975 AASHTO SPECIFICATIONS.

| REVISIONS | | | | |
|-----------|-------------|------|----|------|
| ALT. | DESCRIPTION | DATE | BY | CHK. |
| | | | | |

| | | | | | |
|----------------------------|--|---|--|-------------------------------|--|
| MATERIAL | | 95 GNARLED HOLLOW RD. EAST SETAUKET, N.Y. 11733 | | P&K TUBULAR PRODUCTS, INC. | |
| STOCK SIZE | | TITLE RTB8M30IAD16 | | | |
| FINISH OR TEMPER | | DR. W.W.W. 11-23-09 | | DWG. NO. 10074 | |
| | | CHK. S.A.F. 11-23-09 | | | |
| | | APP. | | | |
| CUSTOMER NEW HAVEN, CT. | | SCALE NONE | | | |

**CONTINUOUS ALUMINUM POLE ON TRANSFORMER BASE
WITH 6'-0" ARM
NOT TO SCALE
ALUMINUM POLE AND ARM
AS NOTED**