

This drawing is property of Spring City Elect. Mfg. and is issued to the recipient with the understanding that it shall not be copied, duplicated, passed on to unauthorized parties, nor used for any purpose other than that for which it is specifically furnished except with Spring City's written permission.

**LUMINAIRE SPECIFICATIONS**

- STYLE: BISHOP'S CROOK (110 REFRACTIVE GLOBE)
- HEIGHT: 33'-0"
- WIDTH: 17"
- MATERIAL: CAST ALUMINUM AND SPUN ALUMINUM
- GLOBE: REFRACTIVE POLYCARBONATE
- FINISH: PRIME PAINT THEN FINISH PAINT, SHERWIN WILLIAMS
- LAMPING: ACRYLON - CEDAR GREEN SW-4072
- VOLTAGE: 250 WATT HIGH PRESSURE SODIUM (LAMP BY OTHERS)
- SOCKET: 120 VOLT
- DISTRIBUTION: TYPE III (ASYMMETRIC DISTRIBUTION)
- PHOTO CONTROL: 120 VOLT TWIST LOCK PHOTOCELL

**CROSS ARM SPECIFICATIONS**

- STYLE: BISHOP'S CROOK WITH RUSSELLFIELD ADAPTOR
- HEIGHT: 6'-0"
- WIDTH: 28" FROM E OF CROOK TO E OF LUMINAIRE
- MATERIAL: ALUMINUM PIPE WITH CAST ALUMINUM ORNAMENTATION
- FINISH: PRIME PAINT THEN FINISH PAINT, SHERWIN WILLIAMS
- ACRYLON - PLEASE SPECIFY COLOR:  BLACK  GREEN

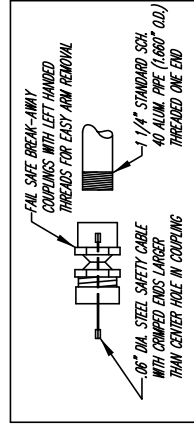
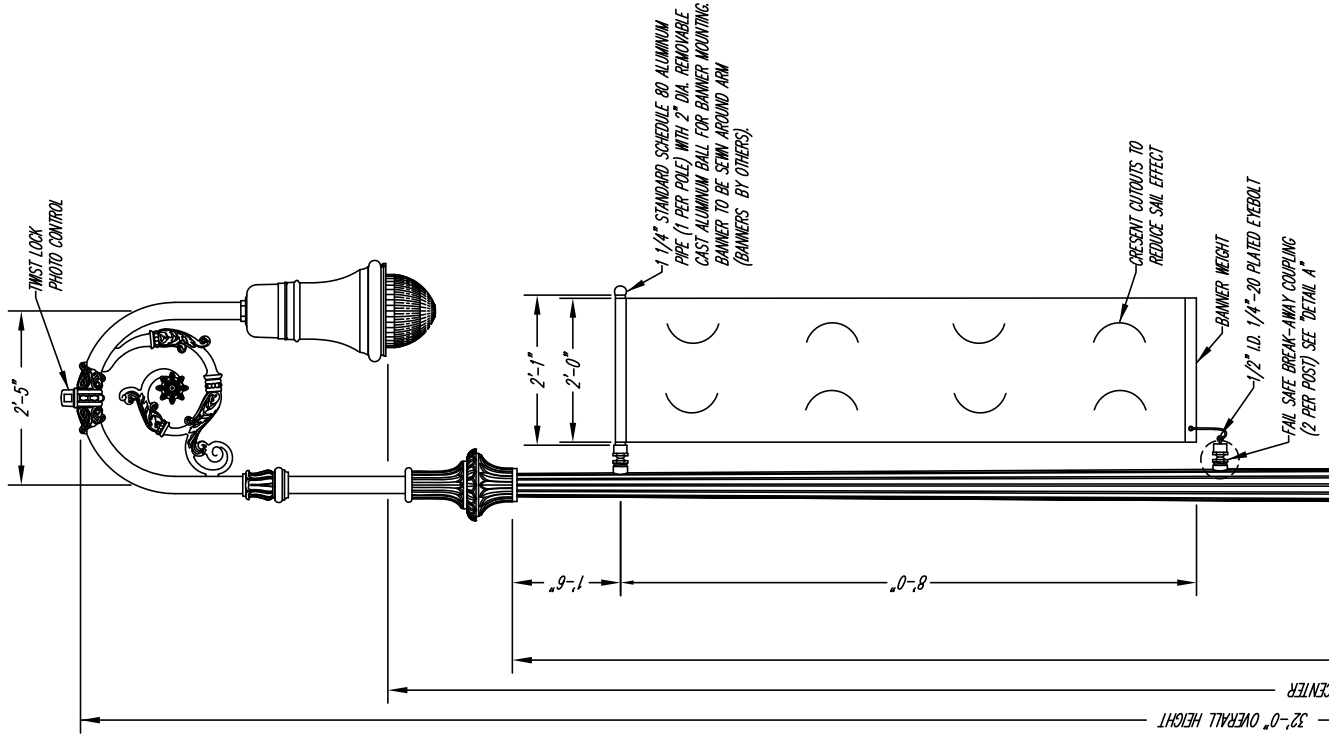
**LAMP POST SPECIFICATIONS**

- STYLE: NORTHAMPTON STEEL
- HEIGHT: 26'-0"
- PHOTOMETRIC CENTER: 27'-8 3/4"
- BASE: 24" DIAMETER
- MATERIAL: 7 GAUGE, 12 FLAT FLUTE STEEL MONOTUBE CONSTRUCTION
- SHAFT: 2 PIECE, (WRAP AROUND) HEAVY WALL CAST IRON PER A.S.T.M. A48-83 CLASS 30
- FINISH: ACRYLON - PLEASE SPECIFY COLOR:  BLACK  GREEN
- ACCESS DOOR: LOCATED IN BASE TO CONCEAL WITH HAND HOLE IN STEEL
- GROUND STUD PROVISIONS: 1/4"-20 SQUARE NUT WELDED TO INSIDE WALL OF SHAFT OPPOSITE HAND HOLE FOR GROUND STUD (GROUND STUD PROVIDED BY OTHERS)
- ANCHOR BOLTS: (4) 1" DIA. X 30" + 4" HOOK (FULLY GALVANIZED WITH 2 GALVANIZED NUTS AND 2 GALVANIZED WASHERS PER BOLT)
- BOLT PROJECTION: 5" REQUIRED
- TENSION: 3 1/2" DIA. X 6" HIGH (TO ACCEPT CROSS ARM)

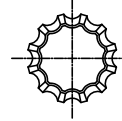
**BANNERS**

- SPRING CITY ELECTRICAL MFG. CO. WILL NOT BE HELD LIABLE FOR ANY DAMAGES INCURRED UNLESS THE FOLLOWING INFORMATION IS PROVIDED IN REGARD TO BANNERS:
- 1. MATERIAL: NYLON OR CANVAS, MAY VARY
- 2. THICKNESS OF MATERIAL: .010"
- 3. SIZE, TYPE AND NUMBER OF CUTOUTS: (8) 8" X 8" CRESCENT AS SHOWN
- 4. WEIGHT OF BANNER WEIGHT: 1 1/4 LB

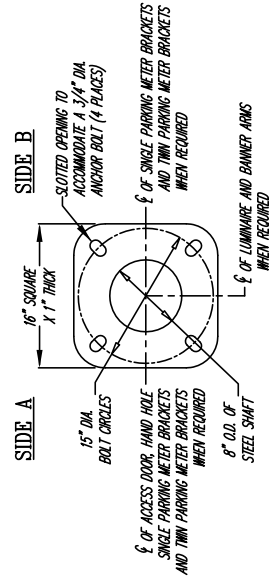
△ QUANTITY .... 2 LUMINAIRES REQUIRED  
 PLUS 6 SPARE BALLASTS REQUIRED  
 PER S.O. #: 180662



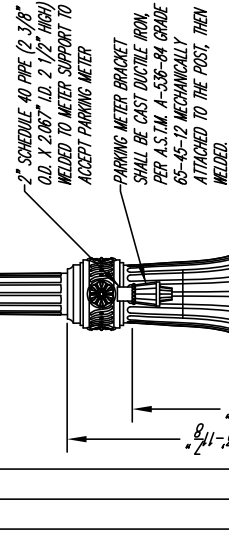
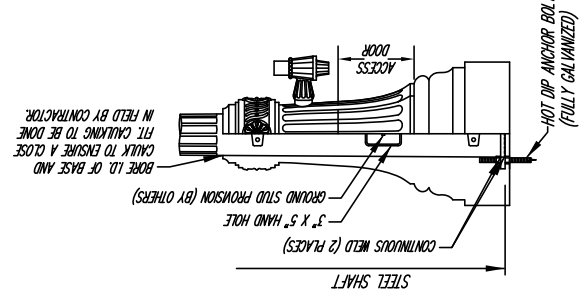
DETAIL A  
N.T.S.



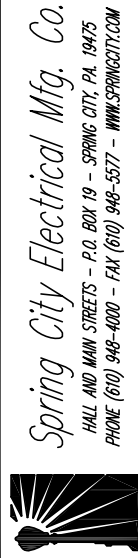
SECTION A-A  
7 GAUGE STEEL  
12 FLAT FLUTE  
N.T.S.



TRAFFIC FLOW →  
SECTION B-B  
N.T.S.



PLEASE SEE QUANTITY REQUIREMENTS AND SECTION B-B FOR LOCATION OF BRACKET WHEN REQUIRED.



THE NORTHAMPTON 26'-0" STEEL POST WITH THE BISHOP'S CROOK WITH RUSSELLFIELD ADAPTOR AND THE BISHOPS CROOK 110 REFRACTIVE GLOBE LUMINAIRE

BRACKET HISTORY	
△ QUANTITY - 6 REQUIRED	△ QUANTITY - 6 REQUIRED
BANNER ARMS REQUIRED	BANNER ARM PROVISION REQUIRED
METER BRACKETS NOT REQUIRED	PARKING METER NOT REQUIRED
PER S.O. # 17848	PER S.O. # 18062

DESCRIPTION	CUSTOMER	JOB	SCALE	DRAWN BY:	DATE	DRAWING NO.
THE NORTHAMPTON 26'-0" STEEL POST WITH THE BISHOP'S CROOK WITH RUSSELLFIELD ADAPTOR AND THE BISHOPS CROOK 110 REFRACTIVE GLOBE LUMINAIRE	NEW HAVEN, CT		N.T.S.	P. SULLIVAN	07-12-93	LP-20965

**CITY OF NEW HAVEN  
 DEPARTMENT OF ENGINEERING**  
 RICHARD H. MILLER, P.E., L.S. 9886  
 CITY ENGINEER

DRIVE: X:\ENGINEER\DWG\CITYSTD  
 FILE: DETAILS\LIGHTING STANDARDS\2011 DETAILS  
 DATE: JULY 1, 2011  
 DRAWING NO.: LD-NH-12

**THE NORTHAMPTON 26'-0" STEEL POST WITH THE  
 BISHOPS CROOK WITH RUSSEL LFIELD ADAPTER AND THE  
 BISHOPS CROOK 110 REFRACTIVE GLOBE LUMINAIRE**

NOT TO SCALE

**STEEL POSTS AND LUMINAIRES**

AS NOTED